



Do you know MAT?

Central Phoenix



Central Metro Phoenix MAT providers.
A pocket guide for clinics and resources east of the Interstate 17 and west of the East Loop 101

Meet MAT

MAT stands for medication-assisted treatment. It involves using approved medicines and behavioral therapies, like counseling, to treat substance use disorders. Those medications are methadone, buprenorphine and naltrexone. When you're ready for MAT, this pocket guide can help you find a MAT clinic in your area. It can also connect you with local community resources to help you stay well. Call ahead for eligibility and hours of operation.

Conozca a MAT

MAT significa tratamiento asistido por medicamentos. Consiste en el uso de medicamentos aprobados y terapias conductuales, como asesoría, para tratar trastornos del consumo de sustancias. Esos medicamentos son metadona, buprenorfina y naltrexona. Cuando usted esté listo o lista para el tratamiento MAT, esta guía de bolsillo puede ayudarle a encontrar una clínica MAT en su área. También puede conectarle con los recursos comunitarios locales para ayudarle a mantenerse bien. Llame por adelantado para elegibilidad y horario de operacion.

This publication was made possible by grant number 1H79TI0745 from SAMHSA. The views expressed in the report do not necessarily reflect the official policies of the Department of Health and Human Services; nor does mention of trade names, commercial practices, or organizations imply endorsement by the U.S. Government.

Food and Clothing Central Phoenix

Salvation Army - Laura
Danieli Senior Activity
Center
602-251-2006
613 N. 4th Ave.
Phoenix, AZ 85003

Society of St. Vincent
de Paul
602-261-6886
1075 W. Jackson St.
Phoenix, AZ 85007

602-266-4884
3424 N. 18th Ave
Phoenix, AZ 85015

602-944-0139
9227 N. 10th Ave.
Phoenix, AZ 85021

North Phoenix

Foothills Food Bank
480-488-1145
6038 E. Hidden Valley Dr.
Cave Creek, AZ 85331

Operation Care Food
Bank
602-866-0135
1827 W. Grovers Ave.
Phoenix, AZ 85023

South Phoenix

Andre House
602-252-9023
213 S. 11th Ave.
Phoenix, AZ 85007

Central Arizona
Shelter Services
(CASS)
602-256-6945,
ext. 3059
230 S. 12th Ave.
Phoenix, AZ 85007

CASS Men's Overflow
Shelter
602-256-6945
1214 W. Madison St.
Phoenix, AZ 85007

United Food Bank
480-926-4897
245 S. Nina Dr.
Phoenix, AZ 85210

ICM Food and Clothing
Bank
602-254-7450
501 S. 9th Ave.
Phoenix, AZ 85007

St. Vincent de Paul
Dining Rooms
602-649-0081
112 S. 9th Ave.
Mesa, AZ 85210

67 W. Broadway Rd.
Mesa, AZ 85210

Rio Vista Center
602-243-1866
1431 E. Southern Ave.
Phoenix, AZ 85042

Phoenix Rescue
Mission
602-233-3000
1801 S. 35th Ave.
Phoenix, AZ 85009

Valley Christian
Centers, Inc.
602-258-5163
1326 W. Hadley St.
Phoenix, AZ 85007

Friendly House
602-257-1870
723 S. 1st Ave.
Phoenix, AZ 85003

Shelters - Central Phoenix

Church On Fillmore
602-252-1423
745 W. Fillmore St.
Phoenix, AZ 85007

Whole Life
International
Foundation
602-254-6553
338 N. 15th Ave.
Phoenix, AZ 85007

House Of Refuge
Sunnyslope
602-678-0223
700 N. Central Ave.
Phoenix, AZ 85020

Lamplighter
602-254-5282
1945 W. Van Buren St.,
Ste. 16
Phoenix, AZ 85009

East Phoenix

UMOM New Day
Centers
602-275-7852, ext. 230
3333 E. Van Buren St.
Phoenix, AZ 85008

Salvation Army Family
Service Center
602-267-4130
2707 E. Van Buren St.
Phoenix, AZ 85008

First Pentecostal
Church Community
Center
602-276-2126
2709 E. Marguerite Ave.
Phoenix, AZ 85040

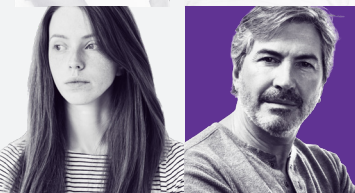
Ozanam Manor
602-850-6900
1730 E. Monroe St.
Phoenix, AZ 85034

DoYouKnowMAT.com | 602-263-3000 | #MATWorks



¿Conoces a MAT?

Central Phoenix



MAT Locations

- Center for Behavioral Health**
1501 E. Washington St., Phoenix, AZ 85034
602-253-6553
- Community Medical Services (CMS)**
4527 N. 27th Ave., Phoenix, AZ 85017
602-775-5655
- Connections Access**
3333 N. 7th Ave., Phoenix, AZ 85013
602-753-3360
- Intensive Treatment Systems (ITS)**
651 W. Coolidge Rd., Phoenix, AZ 85013
602-248-0550
- Terros Health**
3864 N. 27th Ave., Phoenix 85017
602-685-6000
- Valle Del Sol**
3807 N. 7th St., Phoenix, AZ 85014
602-258-6797
- CleanSlate**
15255 N. 40th St., Bldg. 5, Ste. 135
Phoenix, AZ 85032
480-417-4216
- 2nd Chance Treatment Centers**
16620 N. 40th St. Ste. I-5, Phoenix, AZ 85032
602-464-9576
- Intensive Treatment Systems (ITS)**
19400 N. Cave Creek Rd., Ste. 18
Phoenix, AZ 85024
602-996-0098

