

2024 Over the Counter (OTC) Item Catalog

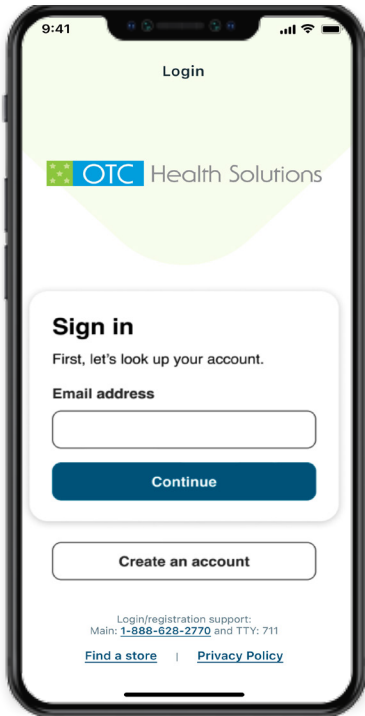


Please keep this valuable booklet nearby. You'll need it to look up the OTC items you want to order. It also contains step-by-step instructions on how to order online, by phone or use your OTC benefits in store.

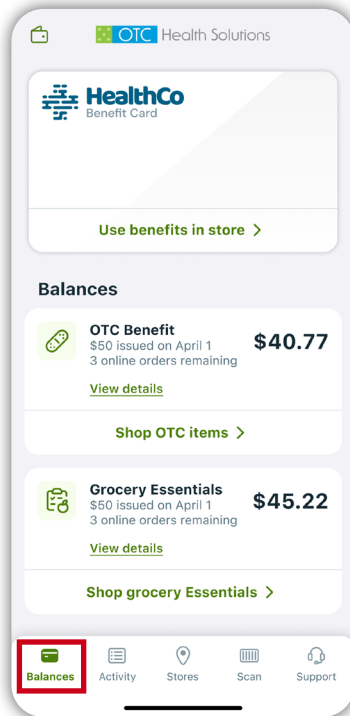


New! The OTC Health Solutions App

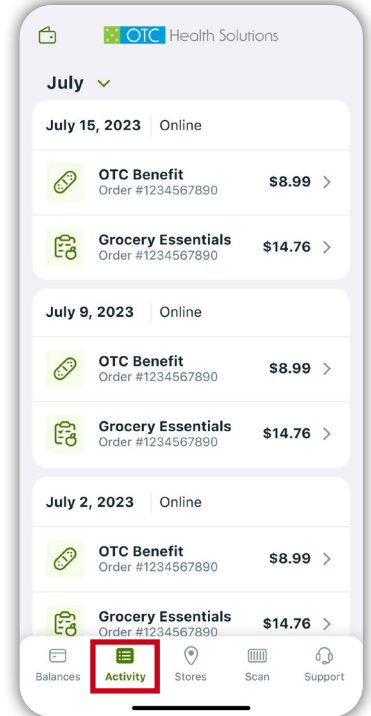
Get the most out of your benefit using our mobile app! Simply download the OTC Health Solutions app from the App Store (iOS) or Google Play (Android), to get started. This app will allow you to scan and view the items offered, process an order, view past orders, and view account information.



Sign in or create an account

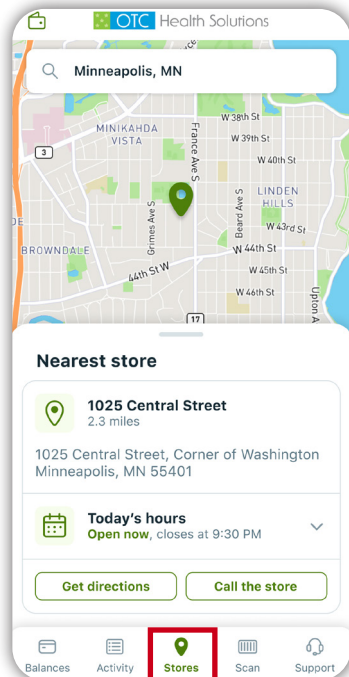


View the balance of your benefits

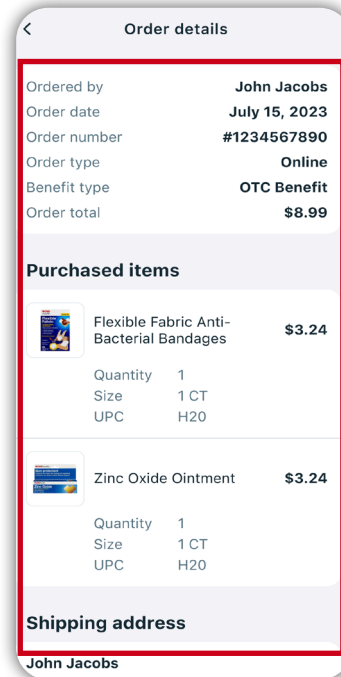


View your order history

Helpful tools:



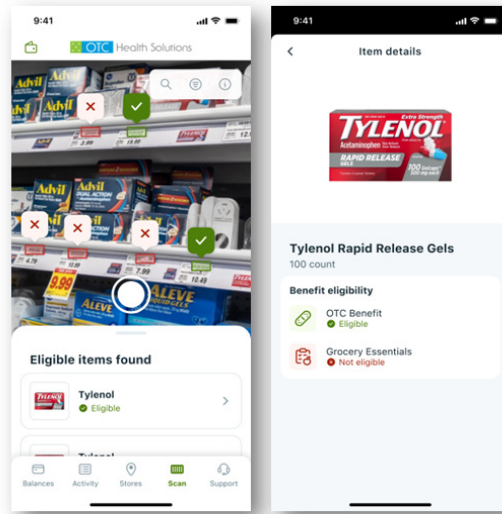
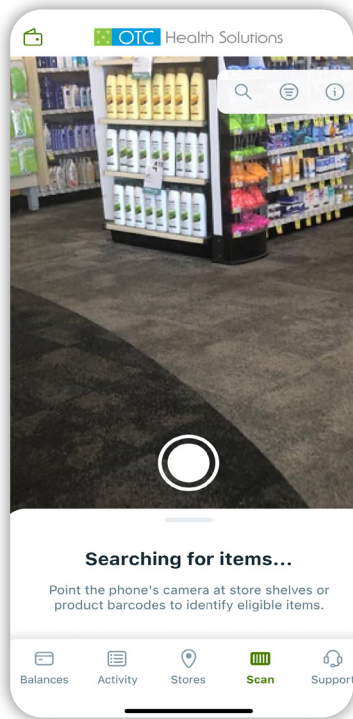
Store locator



View past order details, tracking information and current order status details

The OTC Health Solutions App in store

The OTC Health Solutions App makes it more convenient and quick to ring up items at a store. It is as easy as 1, 2, 3.



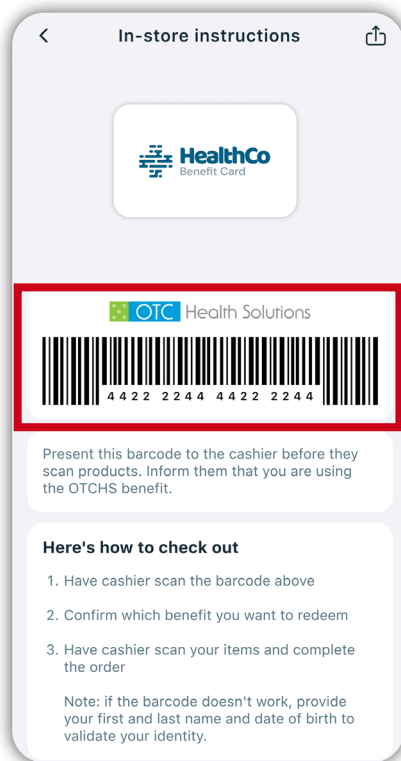
• Approved items



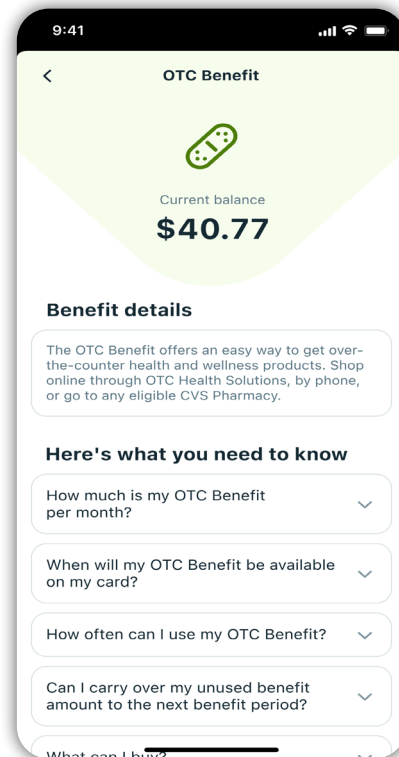
• Non-approved items



1. Scan or enter the items' barcode inside of the store to confirm if it is approved.



2. Show the cashier your digital barcode for faster check out.



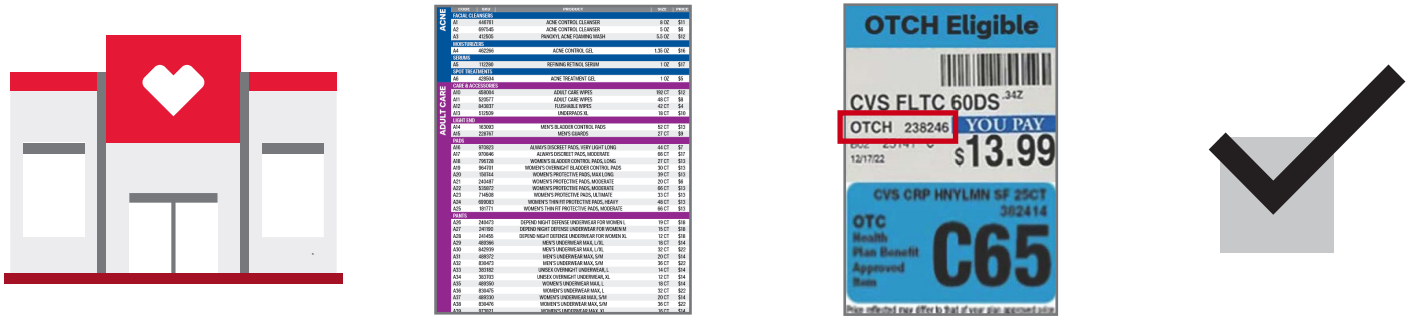
3. After every order you can check your remaining balance and additional FAQs.

Three convenient ways to place an order.

#1 In Store:

How to use your OTCHS (OTC Health Solutions) benefits in store:

- Visit a CVS Pharmacy® store (excluding Target, Schnucks and select other CVS Pharmacy® locations).
- Find approved items. Only the items in this booklet are available to order.
- Look for the “OTCH” indicator and review the SKU number to check if the item qualifies. Items can be found in the OTCHS section, throughout the aisles. You can also use the OTC Health Solutions App to scan the item’s label to confirm if it is approved.
- Go to any register to check out and give the cashier your first name, last name, and date of birth or present the cashier with your bar code in the OTC Health Solutions App.



Visit your nearest CVS Pharmacy store.

Find approved items available through your plan's booklet.

Look for the blue labels containing the OTCH indicator, SKU number or by scanning with the OTCHS App to confirm item eligibility.

Go to any register to process your order.

| CODE | SKU | PRODUCT | SIZE | PRICE |
|------|--------|--------------------------|--------|-------|
| A25 | 981751 | CETIRIZINE 10MG SOFTGELS | 40 CT | \$24 |
| A53 | 444236 | CETIRIZINE 10MG TABLETS | 14 CT | \$11 |
| A3 | 444238 | CETIRIZINE 10MG TABLETS | 30 CT | \$10 |
| A27 | 444255 | CETIRIZINE 10MG TABLETS | 45 CT | \$24 |
| A47 | 571851 | CETIRIZINE 10MG TABLETS | 365 CT | \$58 |

Look for “OTCH” followed by the 6-digit SKU number and match it to your plan catalog.

PLEASE NOTE: The regular retail price in the store may vary. For prices that apply when you use your OTC benefits, please consult this booklet. Booklet prices cannot be combined with promotional offers or ExtraBucks® Rewards. Not all products will be carried in all CVS® stores.

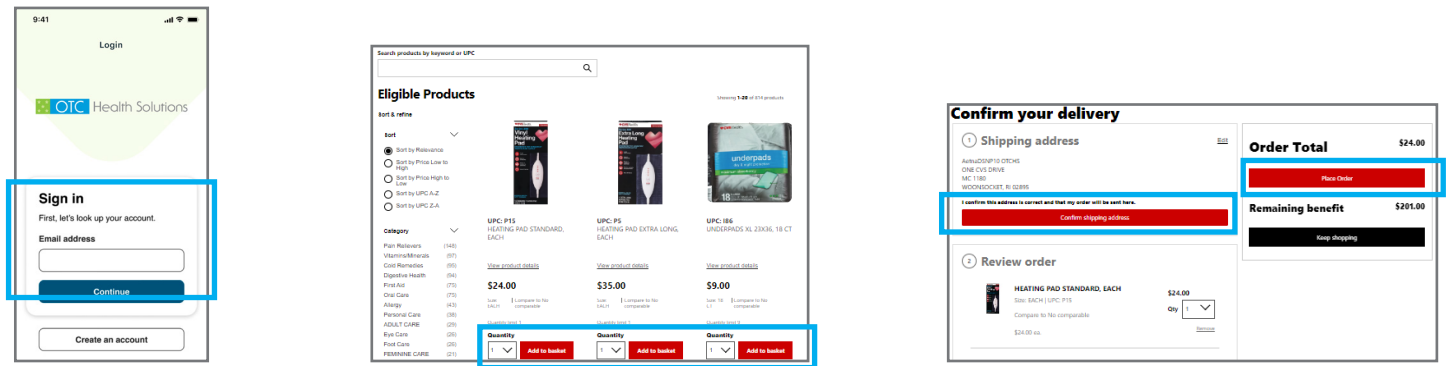
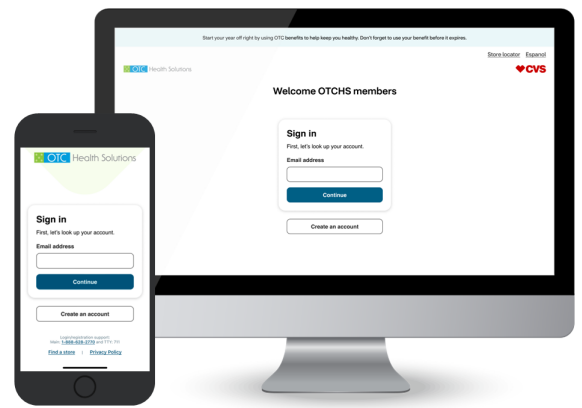
#2 Online:

If it is your first time placing an order online, you will need to create an account. If a member shares an email address with a spouse or caregiver who also has an OTC account, they will only be able to make one account.

How to place an order online:

- Search for the OTCHS website:
<https://www.cvs.com/benefits>.
- After you sign in, your benefit amount and balance will show. Select the benefit you would like to shop for.
- Search through the available items and add to your basket. Your total and balance will be shown. Once you are ready to place your order, select “Checkout”.
- Confirm the shipping information and then select “Place Order”.
- You will be directed to the Order Summary. This page will show you the order number, shipping address, the date the order was processed, and the delivery timeframe.

You will receive emails with the latest status updates as your order is processing.



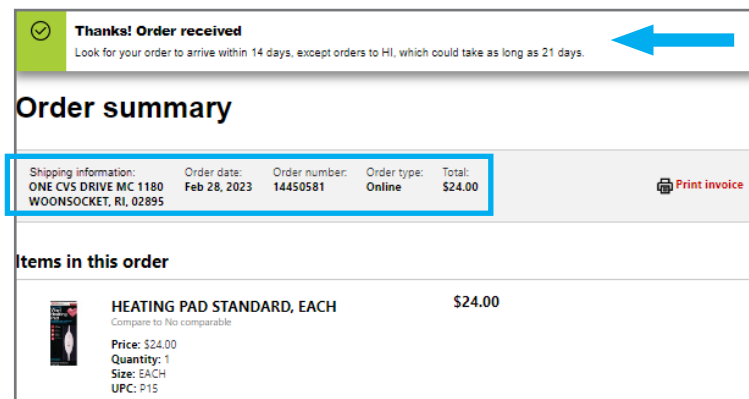
Sign in to your account.



Browse through the items and add to your basket.



Confirm shipping information and place your order.



The Order Summary page will appear. This will allow you to see the order number, shipping address, date of the order, and delivery timeframe.

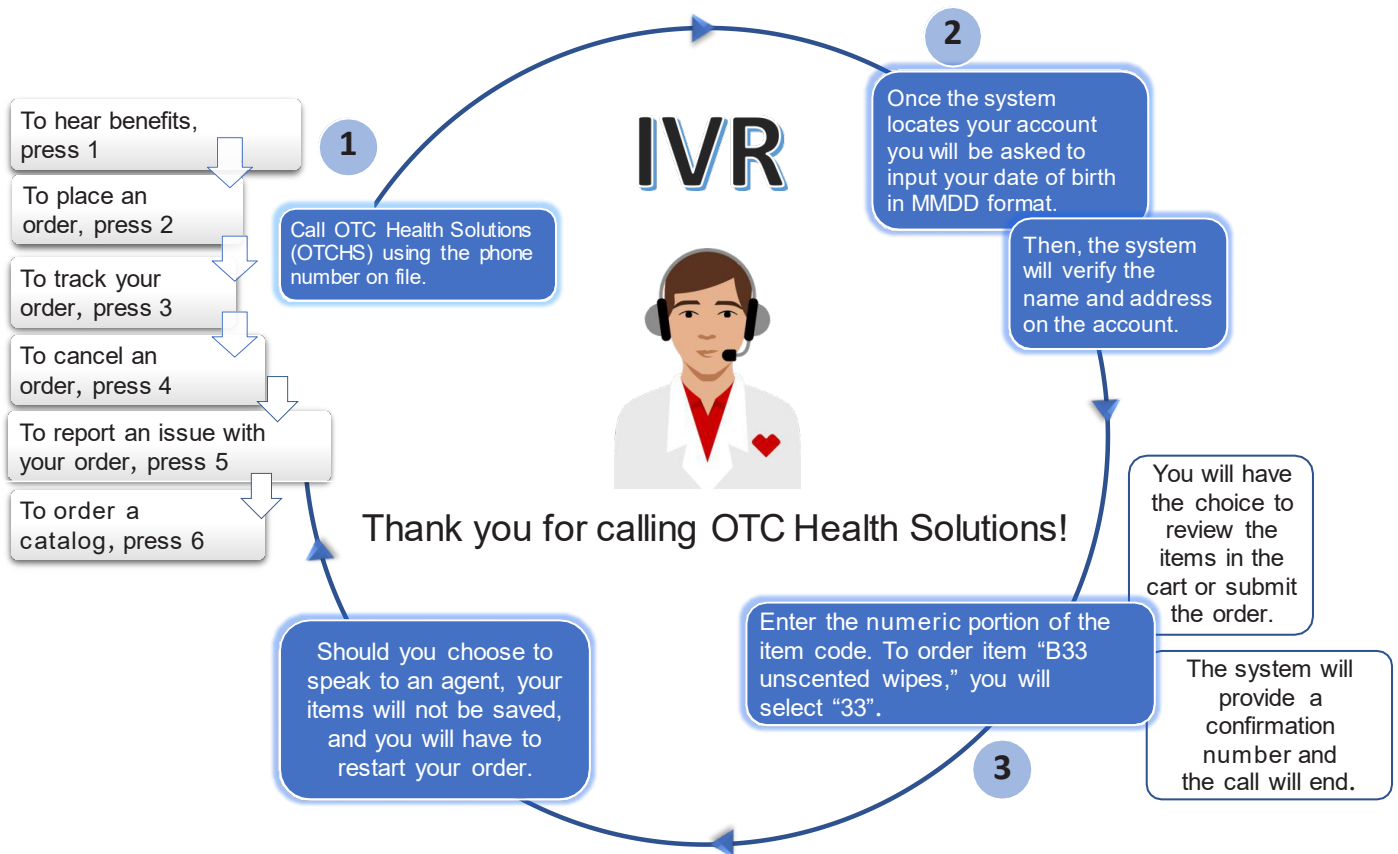
IMPORTANT: Orders for each benefit period must be placed by 11:59 PM ET of the last day of the benefit period. Orders can only be cancelled within 30 minutes after being processed. Please review the order frequency limits located in the FAQs to avoid missing benefit amounts.

#3 By Phone:

Orders can be placed by calling **1-833-331-1572 (TTY: 711)**. You can talk to an agent Monday to Friday, from 9 AM to 8 PM local time. Please have your order ready before you call.

How to place an order by phone (IVR system):

- Call OTCHS using the phone number on file. The phone number on file is provided to OTCHS by your health plan. If you wish to use a different number to order through the IVR system, you can provide the alternative number to an OTCHS agent so it can be added to your account.
- Please enter the number of the item code.
Example: If you want to order item “B33” you will enter “33” and wait for the system to repeat the item. The system will read back the item name, quantity, and ask if the selection is correct. Please let the system finish the prompt before you make your selection.
- Once the order is complete, you will have the choice to review and edit the items in the cart, submit the order, or speak to an agent. Should you choose to speak to an agent, your items will not be saved and you will have to restart your order.



RETURN POLICY: Due to the personal nature of the products, no returns or exchanges are allowed. If you haven't received your order or if you received a defective or damaged item, please call OTC Health Solutions within 30 days of placing your order.

- If your item is not in stock, an item of similar or greater value may be substituted in your order.

Frequently asked questions:

Where can I find my member ID number?

It can be found on the front of your health plan ID card. Refer to page 10 for additional instructions on how to locate it.

What is the Over-the-Counter (OTC) benefit?

The benefit lets you get over-the-counter items by going to any allowed stores. You can also order by phone at **1-833-331-1572 (TTY: 711)** Monday to Friday, from 9 AM to 8 PM local time or online at <https://www.cvs.com/benefits>. You order from a list of approved items, and it will be sent to your address.

How much is my OTC benefit?

You have \$100.00 per month.

How often can I use my OTC benefit?

Your OTC benefit can be utilized once throughout the month if you use the home delivery service, that is, if you order by phone or online. However, you can use your benefit unlimited times at any OTCHS-enabled CVS Pharmacy during the month.

Can I carry over unused benefit amount to the next benefit period?

Benefit amounts do not carry over.

Can I order more than my benefit amount?

You can't order more than your benefit amount online or by phone. However, you may go over your benefit amount at any allowed CVS Pharmacy® store and pay the difference out of pocket.

Are all items available at the stores?

Not all items are available in stores. Items marked with a “🚚” in the catalog can only be ordered over the phone or online.

Is there a limit on the number of items I can order?

There is no limit on the number of items you may order. You can order up to three of the same item, per month. There are some items that have special limits. These are marked with a “★” or “■” in the catalog.

How long will it take to receive my order?

Most orders will arrive in less than 7 business days. It may take longer during peak volume periods as well as for orders that have hazardous items. If you have not received your order within 14 days please call OTC Health Solutions at **1-833-331-1572 (TTY: 711)** Monday to Friday, from 9 AM to 8 PM local time.

Can I cancel my order once it has been placed?

Orders can only be cancelled within 30 minutes after being placed. To cancel an order, you can use the automated IVR system or talk to an agent.

How do I confirm my order was placed?

Once the order is placed, you will receive an order number. Access to order history is also available in the portal/app. Always keep your order number.

Can I track my order?

You can use our automated IVR system to track an order. If your phone number or email was added to your account, you will also receive email/ text updates. You can also view tracking information through our OTCHS portal/app.

How can I receive another copy of this booklet?

You will get a digital copy of the booklet when you receive status updates through email or text. You can also order a copy using our automated IVR system, talking to an agent, or by printing one from the plan web page.

Where can I get additional information about the products?

In this booklet you will find SKU numbers that can be used at <https://www.cvs.com> to look up the images and item details.

How will the items be shipped?

Items are shipped via UPS to your home at no cost to you.

Can I return items and receive cash as reimbursement?

No, you receive an allowance from your health plan to spend on eligible OTC items, there are no cash reimbursements allowed through program.

What is the IVR used for?

You can always use our automated IVR system 24/7 to:

- Place an order
- Track an order
- Cancel an order
- Hear benefit information
- Order a booklet

Additional notes:

- To order certain vitamins, it is advised that you talk to your doctor before you place an order. These are called “dual-purpose items” which are marked with a “▶”.
- Items in this booklet are for personal use and can only be ordered for the member.

If you have not received your items within 14 days after ordering, please call: 1-833-331-1572 (TTY: 711), Monday to Friday, 9 AM to 8 PM local time.



Need help?

Get help locating your member ID

To log in or create an account online you can find your member ID on your insurance card. Refer to the example card shown.



Walkthrough videos

Scan the QR codes below to watch a walkthrough video on how to place your orders in store or online.

How to place an order in store



How to place an order online



Favorite Items



Adult care wipes

CODE A10
SKU 458004



Rubbing alcohol wipes

CODE F139
SKU 444797



Flushable wipes

CODE A12
SKU 843837



Heating pad extra long

CODE E44
SKU 215314



Skin therapy lotion

CODE H63
SKU 447703



Pulse Oximeter

CODE H116
SKU 814854



Digital body scale

CODE D10
SKU 864739



Reacher

CODE H155
SKU 741739



Facial tissues 8 pack

CODE H204
SKU 265212



Arthritis pain relief 650mg caplets

CODE P9
SKU 193588

| | CODE | SKU | PRODUCT | SIZE | PRICE | |
|---------------------------------|-------------------------------|-----------------------------|--|--------------------------|--------|------|
| ACNE | FACIAL CLEANSERS | | | | | |
| | A1 | 446761 | ACNE CONTROL CLEANSER | 8 OZ | \$11 | |
| | A2 | 697545 | ACNE CONTROL CLEANSER | 5 OZ | \$6 | |
| | MOISTURIZERS | | | | | |
| | A4 | 462266 | ACNE CONTROL GEL | 1.35 OZ | \$16 | |
| | SPOT TREATMENTS | | | | | |
| A6 | 428504 | ACNE TREATMENT GEL | 1 OZ | \$5 | | |
| ADULT CARE | CARE & ACCESSORIES | | | | | |
| | A10 | 458004 | ADULT CARE WIPES | 192 CT | \$12 | |
| | A11 | 520577 | ADULT CARE WIPES | 48 CT | \$8 | |
| | A12 | 843837 | FLUSHABLE WIPES | 42 CT | \$4 | |
| | A13 | 512509 | UNDERPADS XL | 18 CT | \$10 | |
| | LIGHT END | | | | | |
| | A14 | 163093 | MEN'S BLADDER CONTROL PADS | 52 CT | \$13 | |
| | A15 | 228767 | MEN'S GUARDS | 27 CT | \$9 | |
| | PADS | | | | | |
| | A18 | 795728 | WOMEN'S BLADDER CONTROL PADS, LONG | 27 CT | \$13 | |
| | A19 | 964701 | WOMEN'S OVERNIGHT BLADDER CONTROL PADS | 30 CT | \$13 | |
| | A20 | 150744 | WOMEN'S PROTECTIVE PADS, MAX LONG | 39 CT | \$13 | |
| | A21 | 240487 | WOMEN'S PROTECTIVE PADS, MODERATE | 20 CT | \$6 | |
| | A22 | 535872 | WOMEN'S PROTECTIVE PADS, MODERATE | 66 CT | \$13 | |
| | A23 | 714508 | WOMEN'S PROTECTIVE PADS, ULTIMATE | 33 CT | \$13 | |
| | A24 | 699083 | WOMEN'S THIN FIT PROTECTIVE PADS, HEAVY | 48 CT | \$13 | |
| | A25 | 181771 | WOMEN'S THIN FIT PROTECTIVE PADS, MODERATE | 66 CT | \$13 | |
| | ALLERGY | ALTERNATIVE REMEDIES | | | | |
| | | A50 | 955517 | NASAL MIST | 4.6 OZ | \$8 |
| | | A51 | 340125 | NASAL MIST | 0.5 OZ | \$7 |
| | | CETIRIZINE | | | | |
| | | A53 | 925507 | CETIRIZINE 10MG SOFTGELS | 25 CT | \$18 |
| | | A54 | 981751 | CETIRIZINE 10MG SOFTGELS | 40 CT | \$22 |
| | | A55 | 444236 | CETIRIZINE 10MG TABLETS | 14 CT | \$11 |
| | | A56 | 444238 | CETIRIZINE 10MG TABLETS | 30 CT | \$16 |
| A57 | | 571851 | CETIRIZINE 10MG TABLETS | 365 CT | \$58 | |
| A58 | | 444255 | CETIRIZINE 10MG TABLETS | 45 CT | \$22 | |
| A59 | | 389345 | LEVOCETIRIZINE 5MG TABLETS | 35 CT | \$16 | |
| FEXOFENADINE | | | | | | |
| A67 | | 847260 | FEXOFENADINE 180MG TABLETS | 30 CT | \$18 | |
| A68 | | 888489 | FEXOFENADINE 180MG TABLETS | 90 CT | \$34 | |
| INTERMITTENT NASAL SPRAY | | | | | | |
| A70 | | 674958 | FLUTICASONE NASAL SPRAY 144 DOSE | 0.62 OZ | \$21 | |
| A71 | | 797907 | FLUTICASONE NASAL SPRAY 72 DOSE | 0.38 OZ | \$14 | |
| LORATADINE | | | | | | |
| A73 | | 348499 | LORATADINE 10MG SOFTGELS | 60 CT | \$30 | |
| A74 | | 232641 | LORATADINE 10MG TABLETS | 10 CT | \$7 | |
| A75 | | 277760 | LORATADINE 10MG TABLETS | 20 CT | \$14 | |

| CODE | SKU | PRODUCT | SIZE | PRICE |
|------|--------|-------------------------|--------|-------|
| A76 | 232642 | LORATADINE 10MG TABLETS | 30 CT | \$16 |
| A77 | 583518 | LORATADINE 10MG TABLETS | 365 CT | \$45 |
| A78 | 222718 | LORATADINE 10MG TABLETS | 70 CT | \$29 |
| A79 | 919205 | LORATADINE 10MG TABLETS | 90 CT | \$30 |

NASAL AND EYE

| | | | | |
|-----|--------|---|--------|------|
| A82 | 343025 | DIPHENHYDRAMINE HCl 25MG CAPSULES | 20 CT | \$5 |
| A83 | 477069 | DIPHENHYDRAMINE HCl 25MG TABLETS | 100 CT | \$12 |
| A84 | 477066 | DIPHENHYDRAMINE HCl 25MG TABLETS | 24 CT | \$4 |
| A85 | 870284 | DIPHENHYDRAMINE HCl 25MG TABLETS | 365 CT | \$19 |
| A86 | 477068 | DIPHENHYDRAMINE HCl 25MG TABLETS | 48 CT | \$8 |
| A87 | 994279 | DIPHENHYDRAMINE HCl 50MG LIQUID, CHERRY | 4 OZ | \$6 |
| A88 | 508424 | DIPHENHYDRAMINE HCl 50MG LIQUID, GRAPE | 4 OZ | \$6 |
| A89 | 994433 | NASAL STRIPS | 10 CT | \$5 |

BATTERIES - HEARING AID

| | | | | |
|-----|--------|--------------------------------|------|-----|
| B52 | 186733 | HEARING AID BATTERIES SIZE 13 | 8 CT | \$8 |
| B53 | 186739 | HEARING AID BATTERIES SIZE 312 | 8 CT | \$8 |
| B54 | 186750 | HEARING AID BATTERIES SIZE 675 | 8 CT | \$8 |

ALTERNATIVE REMEDIES

| | | | | |
|------|--------|-----------------------------------|-------|------|
| C2 ▶ | 889580 | AIRSHIELD CHEWABLE TABLETS, BERRY | 32 CT | \$7 |
| C3 ▶ | 970454 | AIRSHIELD GUMMIES, ORANGE LEMON | 42 CT | \$11 |
| C4 ▶ | 320711 | AIRSHIELD TABLETS, ORANGE | 10 CT | \$7 |
| C5 ▶ | 381791 | AIRSHIELD TABLETS, ORANGE | 20 CT | \$11 |
| C7 | 554912 | VITAMIN C 1000MG POWDER PACKETS | 10 CT | \$5 |

CHEST RUBS

| | | | | |
|----|--------|---------------------|---------|-----|
| C8 | 277898 | MEDICATED CHEST RUB | 1.76 OZ | \$5 |
| C9 | 587618 | MEDICATED CHEST RUB | 3.53 OZ | \$8 |

COLD TABLETS

| | | | | |
|-----|--------|--|-------|------|
| C14 | 954405 | COLD AND FLU COOLING SEVERE DAYTIME RELIEF CAPLETS | 24 CT | \$11 |
| C15 | 362029 | COLD AND FLU DAY AND NIGHT RELIEF SOFTGELS | 24 CT | \$9 |
| C16 | 896264 | COLD AND FLU DAY AND NIGHT RELIEF SOFTGELS | 48 CT | \$15 |
| C17 | 890425 | COLD AND FLU DAYTIME RELIEF SOFTGELS | 16 CT | \$6 |
| C18 | 338131 | COLD AND FLU HBP RELIEF TABLETS | 20 CT | \$8 |
| C20 | 890411 | COLD AND FLU MULTI-SYMPTOM NIGHTTIME RELIEF SOFTGELS | 16 CT | \$6 |
| C21 | 164257 | COLD AND FLU MULTI-SYMPTOM DAY AND NIGHT RELIEF SOFTGELS | 24 CT | \$9 |
| C22 | 970808 | COLD AND FLU SEVERE DAY AND NIGHT RELIEF SOFTGELS | 24 CT | \$11 |
| C23 | 362042 | COLD AND FLU SEVERE DAYTIME RELIEF SOFTGELS | 24 CT | \$12 |
| C24 | 970805 | COLD AND FLU SEVERE NIGHTTIME RELIEF SOFTGELS | 24 CT | \$12 |
| C25 | 970306 | COLD AND FLU SEVERE RELIEF CAPLETS | 24 CT | \$8 |
| C27 | 244956 | COUGH AND COLD HBP RELIEF TABLETS | 16 CT | \$7 |
| C28 | 719048 | COUGH AND COLD SEVERE NIGHTTIME RELIEF POWDER PACKETS | 6 CT | \$8 |
| C29 | 551102 | FLU HBP RELIEF MAXIMUM STRENGTH | 20 CT | \$8 |
| C30 | 633103 | MULTI-SYMPTOM SEVERE COLD POWDER PACKETS | 6 CT | \$8 |

| CODE | SKU | PRODUCT | SIZE | PRICE |
|---------------------|--------|--|---------|-------|
| COUGH | | | | |
| C34 | 132213 | CHEST CONGESTION AND COUGH HBP SOFTGELS | 20 CT | \$8 |
| C36 | 297885 | CHEST CONGESTION RELIEF TABLETS | 60 CT | \$9 |
| C37 | 895137 | COUGH AND CONGESTION SEVERE RELIEF LIQUID | 6 OZ | \$13 |
| C38 | 895138 | DM MAXIMUM STRENGTH LIQUID | 6 OZ | \$13 |
| C42 | 236502 | MUCUS DM EXTENDED RELEASE TABLETS | 20 CT | \$14 |
| C43 | 173270 | MUCUS DM MAXIMUM STRENGTH EXTENDED RELEASE TABLETS | 14 CT | \$16 |
| C44 | 173321 | MUCUS DM MAXIMUM STRENGTH EXTENDED RELEASE TABLETS | 28 CT | \$26 |
| C45 | 259459 | MUCUS EXTENDED RELEASE TABLETS 1200MG | 14 CT | \$16 |
| C46 | 971824 | TUSSIN CF LIQUID | 4 OZ | \$7 |
| C47 | 707516 | TUSSIN DM LIQUID | 4 OZ | \$6 |
| C48 | 707512 | TUSSIN DM LIQUID | 8 OZ | \$10 |
| C49 | 971823 | TUSSIN DM NIGHTTIME | 4 OZ | \$6 |
| C50 | 477060 | TUSSIN DM SUGAR FREE LIQUID | 8 OZ | \$8 |
| COUGH DROPS | | | | |
| C51 | 379157 | COUGH DROPS HONEY LEMON | 160 CT | \$6 |
| C54 | 179666 | SUGAR FREE MENTHOL COUGH DROPS | 140 CT | \$6 |
| DEVICES | | | | |
| C55★ | 193592 | DIGITAL THERMOMETER | 1 CT | \$18 |
| C56★ | 423796 | INFRARED THERMOMETER | 1 CT | \$49 |
| C57★ | 202227 | MICRO TEMPLE DIGITAL THERMOMETER | 1 CT | \$25 |
| C59★ | 155912 | RIGID TIP DIGITAL THERMOMETER | 1 CT | \$10 |
| C60★ | 834800 | TEMPLE DIGITAL THERMOMETER | 1 CT | \$42 |
| C61★ | 277896 | VAPOR STEAM COUGH SUPPRESSANT CAMPHOR | 8 OZ | \$11 |
| FLU REMEDIES | | | | |
| C62 | 442927 | COLD AND FLU HBP MULTI-SYMPTOM NIGHTTIME RELIEF LIQUID, CHERRY | 12 OZ | \$9 |
| C63 | 954401 | COLD AND FLU SEVERE DAY AND NIGHT RELIEF LIQUID 2 PACK | 12 OZ | \$19 |
| C64 | 895139 | COLD, FLU & SORE THROAT RELIEF MAX STRENGTH LIQUID | 6 OZ | \$12 |
| C65 | 548074 | MAXIMUM STRENGTH SEVERE COLD LIQUID | 6 OZ | \$12 |
| C66 | 954406 | SEVERE DAYTIME LIQUID | 12 OZ | \$11 |
| C67 | 180192 | SEVERE NIGHTTIME LIQUID | 12 OZ | \$11 |
| HOMEOPATHIC | | | | |
| C70 | 688783 | COLD REMEDY SUGAR FREE CHEWABLE TABLETS, CHERRY | 25 CT | \$10 |
| C71 | 465804 | COLD REMEDY SUGAR FREE CHEWABLE TABLETS, CITRUS | 25 CT | \$10 |
| LIP CARE | | | | |
| C76 | 337401 | COLD SORE TREATMENT | 0.07 OZ | \$18 |
| NASAL/ SINUS | | | | |
| C80 | 164183 | NASAL MIST | 1 OZ | \$7 |
| C81 | 858828 | NASAL MIST SEVERE | 0.5 OZ | \$7 |
| C82 | 858830 | NASAL SPRAY | 0.5 OZ | \$6 |
| C83 | 857132 | NASAL SPRAY | 1 OZ | \$7 |
| C84 | 953436 | NASAL STRIPS LARGE | 30 CT | \$11 |
| C85 | 953437 | NASAL STRIPS MEDIUM | 30 CT | \$11 |
| C86 | 938777 | SINUS AND SEVERE CONGESTION RELIEF CAPLETS | 20 CT | \$12 |
| C87 | 408566 | SINUS PAIN AND CONGESTION RELIEF CAPLETS | 24 CT | \$6 |

| CODE | SKU | PRODUCT | SIZE | PRICE |
|-----------------------------------|--------|---|---------|-------|
| C88 | 343398 | SINUS PE PRESSURE AND PAIN RELIEF CAPLETS | 24 CT | \$8 |
| SALINE | | | | |
| C89 | 891465 | NASAL SPRAY SALINE | 1.5 OZ | \$4 |
| C90 | 277790 | NASAL SPRAY SALINE 2 PACK | 1.5 OZ | \$7 |
| C91 | 896038 | SINUS WASH REFILL SALINE PACKETS | 100 CT | \$14 |
| C92 | 896024 | SINUS WASH SYSTEM NETI POT | 1 CT | \$14 |
| SORE THROAT | | | | |
| C94 | 316620 | SORE THROAT SPRAY | 6 OZ | \$5 |
| DIET NUTRITION - FITNESS | | | | |
| D10 ▶■ | 864739 | DIGITAL BODY SCALE | 1 CT | \$16 |
| DIET NUTRITION - NUTRITION | | | | |
| D17 | 882285 | FOOD THICKENER | 10 OZ | \$9 |
| ANTACIDS | | | | |
| D50 | 690266 | ANTACID CALCIUM CHEWABLE TABLETS, ASSORTED FRUIT | 160 CT | \$9 |
| D51 | 836320 | ANTACID CALCIUM CHEWABLE TABLETS, ASSORTED FRUIT | 96 CT | \$6 |
| D52 | 230995 | ANTACID ULTRA STRENGTH CHEWABLE TABLETS | 72 CT | \$6 |
| D53 | 860849 | HEARTBURN RELIEF CHEWABLE TABLETS | 100 CT | \$9 |
| D54 | 164422 | HEARTBURN RELIEF LIQUID MINT | 12 OZ | \$9 |
| ANTI-GAS MEDICATIONS | | | | |
| D57 | 883928 | GAS RELIEF EXTRA STRENGTH CHEWABLE TABLETS CHERRY | 48 CT | \$12 |
| D58 | 232981 | GAS RELIEF EXTRA STRENGTH CHEWABLE TABLETS PEPPERMINT CRÈME | 18 CT | \$6 |
| D59 | 206805 | GAS RELIEF EXTRA STRENGTH SOFTGELS | 30 CT | \$5 |
| D60 | 690035 | GAS RELIEF ULTRA STRENGTH SOFTGELS | 20 CT | \$4 |
| DIARRHEA | | | | |
| D63 | 690041 | ANTI-DIARRHEAL 2MG SOFTGELS | 24 CT | \$8 |
| D64 | 888495 | ANTI-DIARRHEAL ORAL SOLUTION MINT | 4 OZ | \$6 |
| D65 | 672550 | ANTI-DIARRHEAL 2MG CAPLETS | 12 CT | \$5 |
| D66 | 232907 | ANTI-DIARRHEAL 2MG CAPLETS | 24 CT | \$8 |
| ENZYMES & SUPPLEMENTS | | | | |
| D68 | 878020 | BEANAID CAPSULES | 30 CT | \$6 |
| D69 | 267635 | DAIRY RELIEF CAPLETS | 60 CT | \$14 |
| D70 | 690659 | DAIRY RELIEF CHEWABLE TABLETS | 60 CT | \$14 |
| D71 | 372214 | DAIRY RELIEF SOFTGELS | 32 CT | \$9 |
| FIBER SUPPLEMENTS | | | | |
| D74 | 318142 | DAILY FIBER CAPSULES | 100 CT | \$10 |
| D75 | 252794 | DAILY FIBER CAPSULES | 160 CT | \$15 |
| D76 | 348642 | DAILY FIBER CAPSULES | 320 CT | \$24 |
| D77 | 958326 | DAILY FIBER SUGAR FREE POWDER | 10 OZ | \$9 |
| D78 | 958332 | DAILY FIBER SUGAR FREE POWDER | 23.3 OZ | \$18 |
| D79 | 690260 | EASY FIBER POWDER | 8.6 OZ | \$15 |
| D80 | 199229 | FIBER THERAPY CAPLETS | 100 CT | \$16 |
| D81 | 567388 | GREAT SHAPE FIBER POWDER | 17.6 OZ | \$23 |
| H2 BLOCKERS | | | | |
| D84 | 422050 | ACID CONTROLLER MAXIMUM STRENGTH TABLETS | 100 CT | \$27 |
| D85 | 398671 | ACID CONTROLLER MAXIMUM STRENGTH TABLETS | 25 CT | \$10 |
| D86 | 398672 | ACID CONTROLLER MAXIMUM STRENGTH TABLETS | 50 CT | \$17 |
| D87 | 690256 | ACID CONTROLLER TABLETS | 30 CT | \$7 |
| D88 | 116960 | ACID CONTROLLER TABLETS | 90 CT | \$19 |

COLD REMEDIES

DIGESTIVE HEALTH

▶ Dual-purpose item

■ 1 per year

| CODE | SKU | PRODUCT | SIZE | PRICE |
|-----------------------------|--------|--|--------|-------|
| D89 | 471127 | HEARTBURN RELIEF TABLETS | 60 CT | \$19 |
| HEMORRHOID TREATMENT | | | | |
| D90 | 317686 | HEMORRHOIDAL COOLING GEL | 0.9 OZ | \$7 |
| D91 | 452277 | HEMORRHOIDAL CREAM | 1.8 OZ | \$11 |
| D92 | 689613 | HEMORRHOIDAL CREAM | 1 OZ | \$7 |
| D93 | 401472 | HEMORRHOIDAL MEDICATED WIPES | 48 CT | \$6 |
| D94 | 913037 | HEMORRHOIDAL MEDICATED WIPES | 96 CT | \$11 |
| D95 | 457931 | HEMORRHOIDAL OINTMENT | 1 OZ | \$7 |
| D96 | 144212 | HEMORRHOIDAL OINTMENT | 2 OZ | \$10 |
| D97 | 961468 | HEMORRHOIDAL SUPPOSITORIES | 12 CT | \$8 |
| LAXATIVES | | | | |
| D98 | 480996 | BISACODYL LAXATIVE 10MG SUPPOSITORIES | 4 CT | \$6 |
| D99 | 166371 | BISACODYL LAXATIVE 10MG SUPPOSITORIES | 8 CT | \$12 |
| D100 | 317857 | BISACODYL LAXATIVE 5MG TABLETS | 10 CT | \$3 |
| D101 | 348639 | BISACODYL LAXATIVE 5MG TABLETS | 25 CT | \$4 |
| D102 | 166363 | BISACODYL LAXATIVE 5MG TABLETS | 50 CT | \$10 |
| D104 | 108530 | GLYCERIN SUPPOSITORIES | 25 CT | \$4 |
| D105 | 707940 | LAXATIVE 25MG TABLETS | 24 CT | \$6 |
| D106 | 789407 | MAGNESIUM CITRATE LAXATIVE LIQUID GRAPE | 10 OZ | \$4 |
| D107 | 494222 | MILK OF MAGNESIA | 12 OZ | \$7 |
| D109 | 713635 | PURELAX POWDER | 4.1 OZ | \$9 |
| D110 | 713639 | PURELAX POWDER | 8.3 OZ | \$13 |
| D111 | 707928 | SENNA 8.6MG TABLETS | 250 CT | \$20 |
| D112 | 707942 | SENNA 8.6MG TABLETS | 50 CT | \$12 |
| D114 | 488021 | STOOL SOFTENER 100MG CAPSULES | 30 CT | \$8 |
| D115 | 310425 | STOOL SOFTENER 100MG SOFTGELS | 100 CT | \$12 |
| D116 | 317683 | STOOL SOFTENER 100MG SOFTGELS | 25 CT | \$7 |
| D117 | 689614 | STOOL SOFTENER 100MG SOFTGELS | 30 CT | \$4 |
| D118 | 707930 | STOOL SOFTENER 50MG TABLETS | 100 CT | \$12 |
| D119 | 918984 | WOMEN'S BISACODYL 5MG TABLETS | 25 CT | \$5 |
| MOTION SICKNESS | | | | |
| D120 | 139139 | MOTION SICKNESS RELIEF TABLETS | 12 CT | \$5 |
| D121 | 452260 | MOTION SICKNESS RELIEF TABLETS | 16 CT | \$8 |
| D122 | 690044 | MOTION SICKNESS RELIEF TABLETS LESS DROWSY FORMULA | 16 CT | \$8 |
| D123 | 366919 | NAUSEA RELIEF CHEWABLE TABLETS | 42 CT | \$9 |
| MULTI-SYMPOM | | | | |
| D125 | 689598 | BISMUTH CAPLETS | 24 CT | \$5 |
| D126 | 703368 | BISMUTH CHEWABLE TABLETS CHERRY | 30 CT | \$5 |
| D127 | 195560 | BISMUTH LIQUID | 8 OZ | \$5 |
| PROBIOTICS | | | | |
| D129 | 919052 | DAILY PROBIOTIC 4 STRAINS 2 BILLION CPU | 30 CT | \$23 |
| D130 | 919055 | DAILY PROBIOTIC 4 STRAINS 24 BILLION CPU | 30 CT | \$21 |
| D131 | 883948 | DAILY PROBIOTIC 9 STRAINS CAPSULES | 15 CT | \$15 |
| D132 | 919047 | DIGESTIVE PROBIOTIC CAPSULES | 20 CT | \$20 |

| CODE | SKU | PRODUCT | SIZE | PRICE |
|-------------------------------|--------|--|--------|-------|
| PROTON PUMP INHIBITORS | | | | |
| D133 | 272739 | ESOMEPRAZOLE MAGNESIUM 20MG CAPSULES | 14 CT | \$10 |
| D134 | 272722 | ESOMEPRAZOLE MAGNESIUM 20MG CAPSULES | 42 CT | \$24 |
| D135 | 481021 | ESOMEPRAZOLE MAGNESIUM 20MG TABLETS | 14 CT | \$10 |
| D136 | 272733 | ESOMEPRAZOLE MAGNESIUM 20MG TABLETS | 28 CT | \$18 |
| D137 | 883055 | LANSOPRAZOLE 15MG CAPSULES | 14 CT | \$10 |
| D138 | 883053 | LANSOPRAZOLE 15MG CAPSULES | 28 CT | \$18 |
| D139 | 883051 | LANSOPRAZOLE 15MG CAPSULES | 42 CT | \$24 |
| D141 | 488025 | OMEPRAZOLE 20MG CAPSULES | 14 CT | \$11 |
| D142 | 488027 | OMEPRAZOLE 20MG CAPSULES | 28 CT | \$19 |
| D143 | 451300 | OMEPRAZOLE 20MG TABLETS | 14 CT | \$11 |
| D144 | 451305 | OMEPRAZOLE 20MG TABLETS 3 PACK | 14 CT | \$24 |
| D145 | 352716 | OMEPRAZOLE AND SODIUM BICARBONATE CAPSULES | 14 CT | \$10 |
| HOT COLD | | | | |
| E42 | 324111 | COLD COMPRESS | 1 CT | \$6 |
| E44★ | 215314 | HEATING PAD EXTRA LONG | 1 CT | \$35 |
| E45★ | 215313 | HEATING PAD STANDARD | 1 CT | \$25 |
| E46 | 318180 | HOT AND COLD COMPRESS | 1 CT | \$15 |
| E47 🚚 | 499911 | HOT AND COLD COMPRESSION WRAP | 1 CT | \$35 |
| E48 | 844209 | ICEBAG LARGE | 1 CT | \$15 |
| PAIN RELIEF DEVICES | | | | |
| E55 | 459917 | TENS REPLACEMENT PADS | 4 CT | \$19 |
| E56★ | 459974 | TENS TARGETED MUSCLE THERAPY | 1 CT | \$68 |
| TAPE | | | | |
| E60 | 729759 | ELASTIC BANDAGE 6IN | 1 CT | \$8 |
| TOPICAL ANALGESIC | | | | |
| E63 | 459362 | ARTHRITIS PAIN RELIEF CREAM | 4 OZ | \$24 |
| E67 | 695905 | COLD AND HOT CREAM | 3 OZ | \$6 |
| E68 | 827058 | COLD AND HOT PATCHES | 3 CT | \$8 |
| E69 | 957604 | COLD AND HOT PATCHES | 5 CT | \$6 |
| E72 | 162527 | ICY HOT LIDOCAINE CREAM | 2.7 OZ | \$10 |
| E73 | 977934 | LIDOCAINE CREAM | 2.7 OZ | \$7 |
| E74 | 197229 | LIDOCAINE PATCHES | 5 CT | \$10 |
| E75 | 371271 | LIDOCAINE PATCHES | 6 CT | \$12 |
| E76 | 196728 | LIDOCAINE PLUS ROLL-ON | 3 OZ | \$11 |
| E77 | 256563 | LIDOCAINE ROLL-ON | 2.5 OZ | \$8 |
| E78 | 328522 | LIDOCAINE ROLL ON WITH MENTHOL | 2.5 OZ | \$8 |
| E79 | 444770 | MEDICATED HEAT PATCH | 1 CT | \$2 |
| E80 | 320989 | MUSCLE RUB CREAM | 2 OZ | \$5 |
| E81 | 200964 | MUSCLE RUB CREAM | 3 OZ | \$7 |
| E82 | 665933 | PAIN RELIEF GEL | 3 OZ | \$12 |
| E83 | 610722 | PAIN RELIEF ROLL-ON MENTHOL | 2.5 OZ | \$13 |
| E84 | 269146 | PAIN RELIEF SPRAY | 3 OZ | \$12 |

| CODE | SKU | PRODUCT | SIZE | PRICE |
|---------------------------------|--------|--|---------|-------|
| EAR CARE | | | | |
| E100 | 941579 | EARWAX CARE KIT | 1 CT | \$9 |
| E101 | 110973 | EARWAX REMOVAL DROPS | 0.5 OZ | \$5 |
| E103 | 457795 | SILICONE EARPLUGS | 12 CT | \$5 |
| E104 | 694929 | SOFT FOAM EARPLUGS | 20 CT | \$5 |
| E105 | 457496 | SWIMMERS EAR SOLUTION | 1 OZ | \$4 |
| EYE CARE | | | | |
| E106 | 797076 | ADVANCED EYE DROPS | 0.5 OZ | \$6 |
| E107 | 209928 | ALLERGY RELIEF EYE DROPS | 0.5 OZ | \$7 |
| E108 | 208334 | ALLERGY RELIEF EYE DROPS | 0.5 OZ | \$7 |
| E109 | 171322 | ARTIFICIAL TEARS LUBRICANT EYE DROPS | 1 OZ | \$9 |
| E110 | 857281 | CONTACT LENS CASES | 2 CT | \$4 |
| E111 | 940154 | CONTACT LENS CASES | 4 CT | \$8 |
| E112 | 976354 | EYE HEALTH 50 SOFTGELS | 90 CT | \$23 |
| E113 | 453524 | EYE ITCH RELIEF | 0.17 OZ | \$14 |
| E114 | 251591 | EYE PATCH | 1 CT | \$6 |
| E115 | 251599 | EYEGLOSS LENS CLEANER | 4 OZ | \$4 |
| E116 | 251597 | EYEGLOSS REPAIR KIT | 1 CT | \$4 |
| E117 | 482149 | EYELID CLEANSING WIPES | 30 CT | \$19 |
| E118 | 694692 | LENS CLEANSING WIPES | 100 CT | \$10 |
| E122 | 219204 | REDNESS RELIEF EYE DROPS | 0.5 OZ | \$5 |
| E124 | 643940 | WARMING EYE COMPRESS | 1 CT | \$10 |
| SOFT LENS CARE | | | | |
| E127 | 284000 | CONTACT LENS REWETTING DROPS | 0.5 OZ | \$6 |
| E128 | 695755 | CONTACT LENS SOLUTION | 24 OZ | \$14 |
| E129 | 695753 | CONTACT LENS SOLUTION | 4 OZ | \$5 |
| E130 | 458126 | SALINE CONTACT SOLUTION 2 PACK | 12 OZ | \$7 |
| FULL SIZE PADS | | | | |
| F53 | 927025 | MAXI PADS LONG SUPER | 42 CT | \$4 |
| F54 | 692443 | MAXI PADS REGULAR | 48 CT | \$4 |
| F55 | 127200 | MAXI PADS WITH WINGS LONG SUPER | 32 CT | \$4 |
| F56 | 842800 | MAXI PADS WITH WINGS OVERNIGHT | 36 CT | \$6 |
| F58 | 872912 | ULTRA THIN PADS LONG SUPER | 40 CT | \$4 |
| F59 | 836891 | ULTRA THIN PADS WITH WINGS REGULAR | 36 CT | \$4 |
| INTIMATE CLEANSING | | | | |
| F60 | 289061 | CLEANSING WIPES FLUSHABLE FRAGRANCE FREE | 32 CT | \$5 |
| F61 | 167765 | FEMININE CLEANSING WASH | 12 OZ | \$7 |
| F62 | 318718 | ITCH RELIEF VAGINAL CREME | 1 OZ | \$6 |
| LUBRICANTS/ MOISTURIZERS | | | | |
| F63 | 418121 | PERSONAL LUBRICANT | 5.6 OZ | \$9 |

| CODE | SKU | PRODUCT | SIZE | PRICE |
|--------------------------|--------|---|--------|-------|
| MEDICATION | | | | |
| F65 | 325394 | CRANBERRY 450MG TABLETS | 100 CT | \$14 |
| F66 | 740732 | MENSTRUAL PMS RELIEF | 32 CT | \$7 |
| F68 | 738694 | URINARY PAIN RELIEF | 12 CT | \$5 |
| F69 | 234554 | URINARY PAIN RELIEF TABLETS | 30 CT | \$8 |
| F70 ▶ | 870916 | UTI TEST STRIPS | 3 CT | \$9 |
| TAMPONS | | | | |
| F76 | 722537 | MENSTRUAL CUP SIZE A | 1 CT | \$22 |
| F77 | 634864 | MENSTRUAL CUP SIZE B | 1 CT | \$22 |
| F78 | 416639 | TAMPONS MULTIPACK | 34 CT | \$6 |
| VAF | | | | |
| F79 | 142811 | CLOTRIMAZOLE 3 DAY VAGINAL CREAM | 1 CT | \$17 |
| F80 | 721062 | MICONAZOLE 1 DAY VAGINAL INSERT AND CREAM | 1 CT | \$18 |
| F81 | 333336 | MICONAZOLE 7 DAY VAGINAL CREAM | 1 CT | \$11 |
| ACCESSORIES | | | | |
| F101 | 337274 | FINGER INJURY KIT | 1 CT | \$6 |
| F102 | 405572 | FIRST AID KIT | 1 CT | \$7 |
| F103 | 310272 | VELCRO FINGER SPLINT | 2 CT | \$6 |
| ADHESIVE BANDAGES | | | | |
| F104 | 257974 | ADVANCED HEALING HYDROCOLLOID BANDAGES | 8 CT | \$6 |
| F105 | 241483 | ANTIBACTERIAL ASSORTED BANDAGES | 120 CT | \$12 |
| F106 | 875957 | ANTIBACTERIAL BANDAGES HEAVY DUTY FABRIC | 20 CT | \$4 |
| F107 | 951341 | ANTIBACTERIAL BANDAGES HEAVY DUTY FABRIC | 60 CT | \$8 |
| F108 | 488598 | ASSORTED BANDAGES VALUE PACK | 200 CT | \$11 |
| F109 | 259370 | BUTTERFLY CLOSURES | 12 CT | \$3 |
| F110 | 383505 | CLEAR BANDAGES | 45 CT | \$4 |
| F111 | 951344 | FLEXIBLE FABRIC ANTIBACTERIAL BANDAGES | 100 CT | \$9 |
| F112 | 875952 | FLEXIBLE FABRIC ANTIBACTERIAL BANDAGES | 20 CT | \$3 |
| F113 | 875951 | FLEXIBLE FABRIC ANTIBACTERIAL BANDAGES | 30 CT | \$3 |
| F114 | 482019 | HEAVY DUTY WATERPROOF BANDAGES | 10 CT | \$4 |
| F115 | 336846 | LIQUID BANDAGE | 0.3 OZ | \$6 |
| F116 | 717967 | SENSITIVE SKIN ADHESIVE BANDAGES | 20 CT | \$5 |
| F117 | 702514 | SHEER BANDAGES ASSORTED | 80 CT | \$4 |
| F118 | 259372 | WATERPROOF FINGER BANDAGES | 20 CT | \$4 |
| F119 | 894077 | WATERPROOF TRANSPARENT DRESSINGS | 8 CT | \$7 |
| IODINE | | | | |
| F120 | 602441 | IODINE | 1 OZ | \$5 |
| LICE | | | | |
| F121 | 178608 | LICE KILLING SHAMPOO | 8 OZ | \$15 |
| F122 | 870947 | LICE SOLUTION KIT | 1 CT | \$19 |
| TREATMENTS | | | | |
| F123 | 617928 | ANTIBIOTIC PAIN & SCAR OINTMENT | 1 OZ | \$11 |
| F125 | 219634 | BACITRACIN OINTMENT | 1 OZ | \$7 |
| F126 | 109405 | CALAMINE PLUS LOTION | 6 OZ | \$7 |
| F127 | 955322 | CALAMINE PLUS SPRAY | 4.1 OZ | \$9 |
| F129 | 482649 | EPSOM SALT | 22 OZ | \$5 |

FEMININE CARE

FIRST AID

▶ Dual-purpose item

FIRST AID

| CODE | SKU | PRODUCT | SIZE | PRICE |
|------|--------|--|--------|-------|
| F131 | 832864 | FREEZE WART REMOVER | 2.7 OZ | \$17 |
| F132 | 373019 | HYDROCORTISONE 1% CREAM | 1 OZ | \$4 |
| F133 | 690242 | HYDROCORTISONE 1% INTENSIVE HEALING CREAM | 1 OZ | \$5 |
| F134 | 373092 | HYDROCORTISONE 1% OINTMENT | 1 OZ | \$5 |
| F135 | 550749 | ITCH RELIEF CREAM | 1 OZ | \$5 |
| F136 | 334700 | JOCK ITCH RELIEF CREAM | 0.5 OZ | \$10 |
| F137 | 311533 | MERTHIOLATE | 2 OZ | \$5 |
| F138 | 531343 | PETROLEUM JELLY | 2.5 OZ | \$4 |
| F139 | 444797 | RUBBING ALCOHOL WIPES | 40 CT | \$6 |
| F140 | 322430 | TRIPLE ANTIBIOTIC AND PAIN RELIEF OINTMENT | 0.5 OZ | \$6 |
| F141 | 702498 | TRIPLE ANTIBIOTIC AND PAIN RELIEF OINTMENT | 1 OZ | \$9 |
| F142 | 219626 | TRIPLE ANTIBIOTIC OINTMENT | 1 OZ | \$8 |
| F143 | 618348 | TRIPLE ANTIBIOTIC PAIN & SCAR OINTMENT | 0.5 OZ | \$7 |
| F144 | 351170 | WART REMOVAL | 0.5 OZ | \$9 |
| F145 | 482021 | WART REMOVER CLEAR STRIPS | 14 CT | \$8 |
| F146 | 946095 | WITCH HAZEL SPRAY | 6 OZ | \$8 |
| F147 | 219642 | ZINC OXIDE OINTMENT | 1 OZ | \$4 |

WOUND CARE

| | | | | |
|------|--------|--|--------|------|
| F148 | 830970 | CLOTH TAPE 1IN X 10YD | 2 CT | \$6 |
| F150 | 893119 | GAUZE PADS 2X2 STERILE | 25 CT | \$4 |
| F151 | 935683 | GAUZE PADS 2X3 NON-STICK | 25 CT | \$6 |
| F152 | 893120 | GAUZE PADS 3X3 STERILE | 25 CT | \$5 |
| F153 | 893125 | GAUZE PADS 3X4 NON-STICK | 10 CT | \$5 |
| F154 | 893121 | GAUZE PADS 4X4 STERILE | 25 CT | \$7 |
| F155 | 894104 | GAUZE ROLL 4IN X 2YDS | 1 CT | \$4 |
| F157 | 330703 | LIDOCAINE BURN RELIEF GEL | 8 OZ | \$7 |
| F158 | 991269 | NITRILE EXAM GLOVES LARGE | 50 CT | \$15 |
| F159 | 991272 | NITRILE EXAM GLOVES ONE SIZE FITS MOST | 120 CT | \$30 |
| F160 | 336795 | NON-IRRITATING PAPER TAPE FOR SENSITIVE SKIN | 1 CT | \$4 |
| F161 | 615637 | PAIN-FREE 1IN WRAP | 2 CT | \$5 |
| F162 | 210000 | PAIN-FREE 2IN WRAP | 1 CT | \$6 |
| F163 | 249816 | SCAR GEL | 0.7 OZ | \$20 |
| F164 | 489905 | SURGICAL FACE MASKS | 25 CT | \$14 |
| F165 | 360094 | SURGICAL FACE MASKS SMALL | 20 CT | \$11 |
| F166 | 964606 | WATERPROOF ADHESIVE TAPE 1/2IN X 5YD | 1 CT | \$2 |
| F167 | 270351 | WATERPROOF TRANSPARENT DRESSINGS ASSORTED | 10 CT | \$9 |
| F168 | 270304 | WATERPROOF TRANSPARENT DRESSINGS LARGE | 4 CT | \$14 |
| F169 | 998839 | WOUND CARE KIT SMALL/MEDIUM 30 PIECES | 1 CT | \$15 |
| F170 | 209024 | WOUND WASH | 6 OZ | \$5 |

ANTIFUNGAL

| | | | | |
|------|--------|--|---------|------|
| F200 | 859684 | ANTI-FUNGAL POWDER | 2.5 OZ | \$9 |
| F201 | 334067 | ATHLETE'S FOOT ANTIFUNGAL POWDER SPRAY | 4.6 OZ | \$10 |
| F202 | 521682 | ATHLETE'S FOOT ANTIFUNGAL CREAM | 1 OZ | \$12 |
| F203 | 211003 | CLOTRIMAZOLE 1% CREAM | 0.5 OZ | \$7 |
| F204 | 743609 | FUNGAL NAIL RENEWAL TREATMENT | 0.33 OZ | \$25 |

CORN/ CALLOUS/ BUNION

| | | | | |
|------|--------|------------------------------|------|-----|
| F205 | 139231 | CORN AND CALLOUS REMOVER KIT | 1 CT | \$6 |
| F206 | 334560 | GEL TOE PROTECTOR | 1 CT | \$6 |

FOOT CARE

| CODE | SKU | PRODUCT | SIZE | PRICE |
|-----------------------------|--------|--|---------|-------|
| F207 | 669939 | GEL TOE SPACERS VALUE PACK | 6 CT | \$9 |
| F208 | 314468 | CORN REMOVER DISKS MEDICATED REGULAR | 9 CT | \$5 |
| F209 | 894580 | MOLESKIN PADDING | 2 CT | \$5 |
| F210 | 267828 | WART REMOVER LIQUID | 0.5 OZ | \$10 |
| FOOT PAIN RELIEF | | | | |
| F211 | 894776 | PLANTAR FASCIITIS GEL ARCH SLEEVE | 1 CT | \$12 |
| ODOR/ WETNESS | | | | |
| F215 | 229790 | FOOT POWDER | 10 OZ | \$9 |
| F216 | 334566 | ODOR CONTROL SPRAY POWDER | 4 OZ | \$6 |
| HAND & FOOT | | | | |
| H50 | 460724 | DRY SKIN INTENSIVE REPAIR HAND LOTION | 2.7 OZ | \$5 |
| THERAPEUTIC | | | | |
| H52 | 147648 | ADVANCED HEALING OINTMENT | 1.75 OZ | \$4 |
| H57 | 905369 | ECZEMA CARE MOISTURIZING CREAM | 12 OZ | \$15 |
| H58 | 282867 | ECZEMA CARE MOISTURIZING CREAM | 7.3 OZ | \$12 |
| H59 | 992500 | ECZEMA RELIEF CREAM | 8 OZ | \$10 |
| H61 | 483135 | INTENSE DRY SKIN THERAPY LOTION | 16.9 OZ | \$9 |
| H62 | 246784 | SCAR GEL | 1.76 OZ | \$20 |
| H63 | 447703 | SKIN THERAPY LOTION | 5.5 OZ | \$6 |
| BLOOD PRESSURE | | | | |
| H102 ▶■ | 800232 | BLOOD PRESSURE MONITOR MANUAL UPPER ARM | 1 CT | \$19 |
| H103 ▶■ | 708884 | BLOOD PRESSURE MONITOR SERIES 100 AUTO UPPER ARM | 1 CT | \$45 |
| H104 ▶■ | 800231 | BLOOD PRESSURE MONITOR SERIES 400 AUTO UPPER ARM | 1 CT | \$63 |
| H105 ▶■ | 800824 | BLOOD PRESSURE MONITOR SERIES 400 AUTO WRIST | 1 CT | \$58 |
| H106 ▶■ | 800228 | BLOOD PRESSURE MONITOR SERIES 600 AUTO WRIST | 1 CT | \$72 |
| H107 ▶■ | 800229 | BLOOD PRESSURE MONITOR SERIES 800 AUTO UPPER ARM | 1 CT | \$89 |
| H110 ▶■ | 800230 | PREMIUM BLOOD PRESSURE MONITOR UPPER ARM | 1 CT | \$69 |
| H111 ■ | 420527 | TALKING BLOOD PRESSURE MONITOR AUTO UPPER ARM | 1 CT | \$75 |
| CARE AND ACCESSORIES | | | | |
| H112 | 130344 | ALCOHOL PREP PADS | 100 CT | \$3 |
| H116 ▶■ | 814854 | PULSE OXIMETER | 1 CT | \$49 |
| H117 | 882127 | SHARPS CONTAINER | 1 CT | \$14 |
| GLUCOSE TABLETS | | | | |
| H120 | 149650 | GLUCOSE TABLETS ORANGE | 10 CT | \$2 |
| H121 | 149647 | GLUCOSE TABLETS ORANGE | 50 CT | \$6 |
| H122 | 149616 | GLUCOSE TABLETS RASPBERRY | 50 CT | \$6 |
| GLUCOSE TESTING | | | | |
| H123 ▶ | 306412 | KETONE TEST STRIPS | 50 CT | \$11 |
| H124 | 732550 | LANCETS MICRO-THIN 33 GAUGE | 100 CT | \$7 |
| H125 ▶ | 149668 | LANCETS THIN 28 GAUGE | 100 CT | \$7 |
| H126 | 235157 | LANCETS ULTRA-THIN 30 GAUGE | 100 CT | \$7 |
| H127 | 343477 | LANCING DEVICE | 1 CT | \$9 |

FOOT CARE

HAND & BODY

HOME DIAGNOSTICS

▶ Dual-purpose item

■ 1 per year

HOME HEALTH CARE

| CODE | SKU | PRODUCT | SIZE | PRICE |
|----------------------------------|--------|--------------------------------|-------|-------|
| AIDES FOR DAILY LIVING | | | | |
| H150 | 868916 | 3X GLASS POCKET MAGNIFIER | 1 CT | \$9 |
| H153 | 792517 | INFLATABLE RUBBER CUSHION SEAT | 1 CT | \$18 |
| H155 | 741739 | REACHER | 1 CT | \$30 |
| BATH SAFETY | | | | |
| H164 ★ | 741738 | SHOWER CHAIR | 1 CT | \$58 |
| COMMODOES/ TOILETTE SEATS | | | | |
| H177 | 792500 | COMMODE LINERS | 12 CT | \$17 |
| H178 | 741737 | MALE URINAL | 1 CT | \$13 |
| H179 ★ | 741741 | RAISED TOILET SEAT 4IN 250LBS | 1 CT | \$49 |

HOUSEHOLD

| | | | | |
|----------------------|--------|----------------------------------|---------|-----|
| CLEANERS | | | | |
| H200 | 942211 | ANTIBACTERIAL DISINFECTANT SPRAY | 12.5 OZ | \$6 |
| H201 | 962813 | DISINFECTING WIPES | 75 CT | \$6 |
| FACIAL TISSUE | | | | |
| H204 | 265212 | FACIAL TISSUES 8 PACK | 10 CT | \$3 |
| H206 | 390195 | WALLET FACIAL TISSUES 6 PACK | 10 CT | \$5 |
| LIGHTS | | | | |
| H207 | 278510 | INDOOR NIGHT LIGHTS | 2 CT | \$8 |

ORAL HYGIENE

| | | | | |
|----------------------------|--------|--|--------|------|
| DENTAL FLOSS | | | | |
| O1 | 469085 | DENTAL FLOSS MINT 43.7YD | 1 CT | \$4 |
| O2 | 933844 | DENTAL FLOSS MINT 43.7YD | 2 CT | \$6 |
| O3 | 454381 | FLOSS PICKS | 90 CT | \$3 |
| O4 | 853023 | FLOSS PICKS MINT | 150 CT | \$4 |
| O5 | 454376 | FLOSS PICKS MINT | 90 CT | \$3 |
| O6 | 978931 | FLOSS PICKS SENSITIVE | 90 CT | \$3 |
| DENTURE | | | | |
| O8 | 230196 | DENTURE ADHESIVE CREAM | 2.4 OZ | \$5 |
| O9 | 213330 | DENTURE CLEANSER EFFERVESCENT TABLETS | 40 CT | \$3 |
| O10 | 122340 | DENTURE CLEANSER EFFERVESCENT TABLETS MINT | 84 CT | \$7 |
| INTERDENTAL | | | | |
| O12 | 902457 | COMFORT NIGHTTIME DENTAL GUARDS | 2 CT | \$20 |
| O13 | 695117 | DENTAL TOOL KIT | 1 CT | \$8 |
| O14 | 246932 | EASEBETWEEN GENTLE PICKS | 120 CT | \$9 |
| O15 | 933823 | INTERDENTAL BRUSHES TIGHT SPACES | 16 CT | \$5 |
| O16 | 227508 | INTERDENTAL BRUSHES ULTRA TIGHT | 32 CT | \$6 |
| O17 | 377971 | INTERDENTAL PICKS ADVANCED SUPER SOFT | 60 CT | \$6 |
| O18 | 572131 | TONGUE BRUSHES | 2 CT | \$6 |
| MANUAL TOOTHBRUSHES | | | | |
| O20 | 682983 | CLEAN PRO TOOTHBRUSHES SOFT | 6 CT | \$6 |
| O21 | 956360 | CLEAR PRO TOOTHBRUSHES MEDIUM | 3 CT | \$3 |
| O23 | 756402 | CROSS ANGLE MULTIPRO TOOTHBRUSHES MEDIUM | 2 CT | \$6 |
| O24 | 813099 | LIGHT-UP TIMER TOOTHBRUSH | 2 CT | \$6 |
| O26 | 956183 | PULSATING TOOTHBRUSH MEDIUM | 2 CT | \$11 |
| O27 | 453008 | PULSATING TOOTHBRUSH SOFT | 2 CT | \$11 |
| O28 | 822225 | TOOTHBRUSH COVERS | 4 CT | \$2 |
| O29 | 910693 | TOOTHBRUSH SOFT | 1 CT | \$1 |
| O30 | 897755 | TOOTHBRUSHES MEDIUM | 2 CT | \$6 |

★1 per period

| CODE | SKU | PRODUCT | SIZE | PRICE |
|-----------------------------|--------|--|---------|-------|
| O31 | 248185 | ULTIMATE CLEAN TOOTHBRUSHES SOFT | 10 CT | \$10 |
| MOUTHWASH | | | | |
| O32 | 336263 | ANTISEPTIC MOUTHWASH BLUE MINT | 8.45 OZ | \$4 |
| O33 | 259712 | ANTISEPTIC MOUTHWASH SPRING MINT | 8.45 OZ | \$4 |
| O35 | 877796 | PEROXIDE SORE MOUTH CLEANSER | 8 OZ | \$6 |
| ORAL ANALGESIC | | | | |
| O37 | 711642 | MOUTH SORE RELIEF LIQUID | 0.5 OZ | \$7 |
| O38 | 258802 | MOUTH SORE RINSE | 16 OZ | \$8 |
| O39 | 997166 | ORAL ANESTHETIC LIQUID | 0.5 OZ | \$7 |
| O40 | 933834 | ORAL PAIN RELIEF GEL | 0.33 OZ | \$6 |
| O41 | 695108 | TEMPORARY LOST FILLING AND LOOSE CAP REPAIR | 1 CT | \$4 |
| O42 | 933833 | TOOTHACHE AND GUM RELIEF GEL | 0.25 OZ | \$9 |
| PORTABLE BREATH CARE | | | | |
| O45 | 259189 | DRY MOUTH MELTING DISCS | 40 CT | \$9 |
| O46 | 998700 | MOISTURIZING ORAL SPRAY 2 PACK | 0.25 OZ | \$3 |
| POWER TOOTHBRUSHES | | | | |
| O47 | 897749 | EASYFLEX FLOSSING REPLACEMENT BRUSH HEADS | 3 CT | \$25 |
| O48 ★ | 857241 | EASYFLEX INFINITY RECHARGEABLE TOOTHBRUSH WITH REPLACEMENT BRUSH HEADS | 1 CT | \$27 |
| O49 ★ | 422345 | EASYFLEX PRO PREMIUM RECHARGEABLE TOOTHBRUSH | 1 CT | \$45 |
| O50 | 341166 | EASYFLEX REPLACEMENT BRUSH HEADS | 3 CT | \$25 |
| O51 | 415475 | EASYFLEX REPLACEMENT BRUSH HEADS | 5 CT | \$29 |
| O60 | 808698 | PROFESSIONAL CLEAN POWER TOOTHBRUSH WITH REPLACEMENT BRUSH HEAD | 1 CT | \$9 |
| O61 | 378381 | SMILESONIC REPLACEMENT BRUSH HEADS | 2 CT | \$32 |
| TOOTHPASTE | | | | |
| O73 | 897738 | ENAMEL GUARD ANTI-CAVITY TOOTHPASTE | 4 OZ | \$5 |
| O74 | 502119 | GUM HEALTH TOOTHPASTE | 4.1 OZ | \$5 |
| O77 | 368775 | SENSITIVE TOOTHPASTE | 3.4 OZ | \$5 |
| O78 | 307117 | SENSITIVE TOOTHPASTE EXTRA WHITENING | 4 OZ | \$5 |
| ACETAMINOPHEN | | | | |
| P1 | 301424 | ACETAMINOPHEN 325MG TABLETS | 100 CT | \$8 |
| P2 | 879536 | ACETAMINOPHEN 500MG CAPLETS | 225 CT | \$13 |
| P3 | 371914 | ACETAMINOPHEN 500MG CAPLETS | 100 CT | \$8 |
| P4 | 686584 | ACETAMINOPHEN 500MG CAPLETS | 24 CT | \$5 |
| P5 | 317581 | ACETAMINOPHEN 500MG GELCAPS | 100 CT | \$9 |
| P6 | 317583 | ACETAMINOPHEN 500MG GELCAPS | 50 CT | \$7 |
| P7 | 695051 | ACETAMINOPHEN 500MG LIQUID CHERRY | 8 OZ | \$8 |
| P8 | 132704 | ACETAMINOPHEN 500MG TABLETS | 100 CT | \$9 |
| P9 | 193588 | ARTHRITIS PAIN RELIEF 650MG CAPLETS | 100 CT | \$9 |
| P10 | 199239 | ARTHRITIS PAIN RELIEF 650MG CAPLETS | 24 CT | \$6 |
| APOTHECARY | | | | |
| P13 | 460706 | 4-A-DAY WEEKLY PILL CASE | 1 CT | \$11 |
| P14 | 715123 | 7-DAY PILL BOX | 1 CT | \$2 |
| P15 | 217709 | AM/PM PILL CASE | 1 CT | \$2 |
| P16 | 728132 | EAR SYRINGE AND NASAL ASPIRATOR | 2 CT | \$6 |
| P18 | 715154 | ORAL SYRINGE | 1 CT | \$4 |
| P19 | 869091 | PILL CRUSHER | 1 CT | \$10 |

★1 per period

| CODE | SKU | PRODUCT | SIZE | PRICE |
|--------------------------|--------|--|--------|-------|
| P20 | 460696 | TABLET CUTTER | 1 CT | \$7 |
| P21 | 715130 | WEEKLY AM/PM PILL PLANNER | 1 CT | \$10 |
| ASPIRIN | | | | |
| P22 | 152314 | ASPIRIN 325MG TABLETS | 100 CT | \$5 |
| P23 | 695034 | BACK AND BODY EXTRA STRENGTH CAPLETS | 100 CT | \$10 |
| P25 | 109017 | HEADACHE RELIEF CAPLETS | 100 CT | \$10 |
| P26 | 695041 | HEADACHE RELIEF GELTABS | 80 CT | \$10 |
| P27 | 695036 | MIGRAINE RELIEF CAPLETS | 100 CT | \$10 |
| P28 | 185226 | MIGRAINE RELIEF CAPLETS | 24 CT | \$5 |
| HEART HEALTH | | | | |
| P37 | 140897 | ASPIRIN 325MG TABLETS | 125 CT | \$8 |
| P38 | 547802 | ASPIRIN 81MG CHEWABLE TABLETS ORANGE | 36 CT | \$2 |
| P39 | 126148 | ASPIRIN 81MG CHEWABLE TABLETS ORANGE | 108 CT | \$8 |
| P40 | 230268 | ASPIRIN 81MG TABLETS | 120 CT | \$5 |
| P41 | 346248 | ASPIRIN 81MG TABLETS | 200 CT | \$10 |
| P42 | 126623 | ASPIRIN 81MG TABLETS | 300 CT | \$11 |
| P43 | 419423 | ASPIRIN 81MG TABLETS | 32 CT | \$3 |
| P44 | 271531 | ASPIRIN 81MG TABLETS | 500 CT | \$14 |
| IBUPROFEN | | | | |
| P47 | 144778 | IBUPROFEN 200MG CAPLETS | 100 CT | \$9 |
| P48 | 374714 | IBUPROFEN 200MG MINI SOFTGELS | 80 CT | \$9 |
| P49 | 306397 | IBUPROFEN 200MG SOFTGELS | 80 CT | \$9 |
| P50 | 213634 | IBUPROFEN 200MG SOFTGELS | 160 CT | \$15 |
| P51 | 795221 | IBUPROFEN 200MG SOFTGELS | 300 CT | \$23 |
| P52 | 923748 | IBUPROFEN 200MG TABLETS | 500 CT | \$19 |
| P53 | 713233 | IBUPROFEN 200MG TABLETS | 200 CT | \$13 |
| P54 | 371948 | IBUPROFEN 200MG TABLETS | 50 CT | \$4 |
| P55 | 678107 | IBUPROFEN MIGRAINE 200MG SOFTGELS | 20 CT | \$4 |
| P56 | 951775 | MOTRIN IB 200MG COATED CAPLETS | 225 CT | \$21 |
| NAPROXEN | | | | |
| P59 | 263652 | NAPROXEN SODIUM 220MG CAPLETS | 90 CT | \$9 |
| P60 | 879445 | NAPROXEN SODIUM 220MG TABLETS | 200 CT | \$15 |
| P61 | 299470 | NAPROXEN SODIUM 220MG TABLETS | 24 CT | \$4 |
| P62 | 299472 | NAPROXEN SODIUM 220MG TABLETS | 50 CT | \$7 |
| P63 | 340744 | NAPROXEN SODIUM 220MG TABLETS BACK AND MUSCLE PAIN | 24 CT | \$4 |
| PAIN RELIEVER GEL | | | | |
| P64 | 441099 | PAIN RELIEVER GEL | 3.5 OZ | \$15 |
| PMS | | | | |
| P66 | 456231 | MENSTRUAL PAIN RELIEF | 24 CT | \$6 |
| SLEEP AIDS | | | | |
| P67 | 245414 | ACETAMINOPHEN PM 500MG CAPLETS | 24 CT | \$5 |
| P68 | 124886 | ACETAMINOPHEN PM 500MG CAPLETS | 100 CT | \$10 |
| P69 | 475817 | IBUPROFEN PM 200MG CAPLETS | 20 CT | \$5 |
| P70 | 263674 | MELATONIN 10MG CAPSULES | 120 CT | \$18 |
| P71 | 866535 | MELATONIN 10MG CAPSULES | 60 CT | \$12 |
| P72 | 268542 | MELATONIN 10MG GUMMIES STRAWBERRY | 60 CT | \$13 |
| P73 | 376137 | MELATONIN 10MG TABLETS | 60 CT | \$11 |
| P74 | 892422 | MELATONIN 12MG TABLETS | 90 CT | \$15 |

| CODE | SKU | PRODUCT | SIZE | PRICE | | |
|--------------------------------|--------|--|--------|-------|-----------------------|---------------------------|
| P75 | 419642 | MELATONIN 3MG TABLETS | 120 CT | \$9 | PAIN RELIEVERS | |
| P76 | 343538 | MELATONIN 5MG GUMMIES STRAWBERRY | 60 CT | \$11 | | |
| P77 | 454600 | MELATONIN 5MG TABLETS | 120 CT | \$11 | | |
| P78 | 866534 | MELATONIN 5MG TABLETS | 90 CT | \$9 | | |
| P79 | 374425 | NAPROXEN SODIUM PM CAPLETS | 20 CT | \$6 | | |
| P80 | 918867 | SLEEP-AID 25MG SOFTGELS | 24 CT | \$8 | | |
| P81 | 960108 | SLEEP-AID 25MG TABLETS | 96 CT | \$16 | | |
| P82 | 918861 | SLEEP-AID 50MG LIQUID BERRY | 12 OZ | \$8 | | |
| P83 | 933380 | SLEEP-AID 50MG LIQUID BERRY | 6 OZ | \$5 | | |
| P84 | 222633 | SLEEP-AID 50MG SOFTGELS | 200 CT | \$30 | | |
| P85 | 864199 | SLEEP-AID 50MG SOFTGELS | 32 CT | \$9 | | |
| HAND SANITIZER | | | | | | PERSONAL CLEANSING |
| P104 | 799023 | HAND SANITIZER | 2 OZ | \$2 | | |
| P105 | 783753 | HAND SANITIZER | 8 OZ | \$4 | | |
| P106 | 598625 | HAND SANITIZER WITH ALOE | 8 OZ | \$4 | | |
| TALCUMS/ DUST POWDER | | | | | SUNCARE | |
| P110 | 227230 | MEDICATED BODY POWDER | 10 OZ | \$7 | | |
| AFTER SUN/ SUN BURN | | | | | | |
| S20 | 985326 | AFTERSUN ALOE VERA GREEN GEL | 20 OZ | \$7 | | |
| S21 | 401538 | AFTERSUN ALOE VERA SOOTHING SPRAY | 6 OZ | \$10 | | |
| GENERAL PROTECTION SKIN | | | | | | |
| S24 | 822572 | SPORT SUNSCREEN SPF 100 CONTINUOUS SPRAY | 6 OZ | \$10 | | |
| S25 | 478059 | SPORT SUNSCREEN SPF 50 CONTINUOUS SPRAY | 6 OZ | \$9 | | |
| S26 | 308277 | SPORT SUNSCREEN SPF 50 LOTION | 8 OZ | \$10 | | |
| S27 | 794661 | SPORT SUNSCREEN SPF 70 CONTINUOUS SPRAY | 6 OZ | \$10 | | |
| S28 | 720856 | ULTRA SHEER DRY TOUCH SUNBLOCK SPF 45 | 3 OZ | \$10 | | |
| S29 | 478041 | ULTRA SHEER SUNSCREEN LOTION SPF 55 | 3 OZ | \$10 | | |
| BONE JOINT CARE | | | | | VITAMINS | |
| V1 ▶ | 349455 | GLUCOSAMINE CHONDROITIN + D3 CAPLETS | 100 CT | \$31 | | |
| V2 ▶ | 145514 | GLUCOSAMINE CHONDROITIN REGULAR STRENGTH TABLETS | 150 CT | \$25 | | |
| V3 ▶ | 247303 | GLUCOSAMINE CHONDROITIN TRIPLE STRENGTH CAPLETS | 120 CT | \$42 | | |
| V4 ▶ | 451093 | GLUCOSAMINE CHONDROITIN TRIPLE STRENGTH CAPLETS | 240 CT | \$66 | | |
| V5 ▶ | 166790 | GLUCOSAMINE CHONDROITIN TRIPLE STRENGTH CAPLETS | 80 CT | \$32 | | |
| V6 ▶ | 247302 | GLUCOSAMINE CHONDROITIN WITH MSM DOUBLE STRENGTH TABLETS | 90 CT | \$28 | | |
| CALCIUM | | | | | | |
| V7 ▶ | 889908 | CALCIUM 500MG + D3 25MCG GUMMIES | 50 CT | \$12 | | |
| V8 ▶ | 287250 | CALCIUM 500MG + D3 25MCG GUMMIES | 60 CT | \$12 | | |
| V9 ▶ | 901330 | CALCIUM 600MG + D3 20MCG TABLETS | 120 CT | \$12 | | |
| V10 ▶ | 409542 | CALCIUM 600MG + D3 20MCG TABLETS | 120 CT | \$12 | | |
| V11 ▶ | 314939 | CALCIUM 600MG TABLETS | 150 CT | \$11 | | |
| V12 ▶ | 145485 | CALCIUM CITRATE + D3 TABLETS | 120 CT | \$14 | | |
| V13 ▶ | 244798 | CALCIUM MAGNESIUM + ZINC TABLETS | 100 CT | \$5 | | |
| COENZYME | | | | | | |
| V14 ▶ | 122869 | COQ-10 50MG SOFTGELS | 45 CT | \$12 | | |
| V15 ▶ | 184708 | COQ-10 100MG SOFTGELS | 45 CT | \$27 | | |
| V16 ▶ | 710797 | COQ-10 200MG SOFTGELS | 108 CT | \$54 | | |
| V17 ▶ | 459957 | COQ-10 400MG SOFTGELS | 39 CT | \$49 | | |

| CODE | SKU | PRODUCT | SIZE | PRICE |
|------------------------------|--------|---|--------|-------|
| COGNITIVE | | | | |
| V20 ▶ | 592601 | 5-FUNCTION BRAIN HEALTH SOFTGELS | 30 CT | \$30 |
| V21 ▶ | 632558 | 6-FUNCTION BRAIN HEALTH SOFTGELS | 30 CT | \$44 |
| V22 | 714451 | COGNITIVE HEALTH EXTRA STRENGTH CAPSULES | 30 CT | \$35 |
| EAR/ EYE | | | | |
| V25 ▶ | 341637 | INNER EAR PLUS CAPLETS | 100 CT | \$28 |
| V26 ▶ | 797751 | LUTEIN 40MG SOFTGELS | 30 CT | \$19 |
| V27 ▶ | 460687 | NATURAL LUTEIN 20MG SOFTGELS | 60 CT | \$16 |
| V28 ▶ | 449050 | VISION HEALTH SUPPLEMENT | 60 CT | \$19 |
| FISH OIL | | | | |
| V29 | 357343 | FISH OIL 1000MG SOFTGELS | 120 CT | \$11 |
| V30 ▶ | 849036 | FISH OIL 1000MG SOFTGELS | 200 CT | \$15 |
| V31 ▶ | 366732 | FISH OIL 1200MG SOFTGELS | 200 CT | \$18 |
| V32 ▶ | 308698 | OMEGA-3 FISH OIL ENHANCED WITH KRILL OIL 500MG SOFTGELS | 80 CT | \$35 |
| V33 ▶ | 717912 | OMEGA-3 KRILL OIL 350MG ANTARCTIC PURE SOFTGELS | 60 CT | \$26 |
| V34 ▶ | 870668 | OMEGA-3 KRILL OIL 500MG ANTARCTIC PURE SOFTGELS | 45 CT | \$28 |
| HAIR/ SKIN/ NAILS | | | | |
| V35 ▶ | 271097 | COLLAGEN + VITAMIN C TABLETS | 120 CT | \$13 |
| V36 ▶ | 928914 | HAIR, SKIN & NAILS CAPLETS | 200 CT | \$22 |
| V37 ▶ | 460133 | HAIR, SKIN & NAILS CAPLETS | 60 CT | \$12 |
| HERBAL SUPPLEMENTS | | | | |
| V38 ▶ | 710800 | 5-HTP 200MG CAPSULES | 30 CT | \$12 |
| V39 | 432062 | BLACK ELDERBERRY GUMMIES | 60 CT | \$19 |
| V40 ▶ | 710802 | CINNAMON 1000MG CAPSULES | 180 CT | \$16 |
| V41 ▶ | 305663 | CRANBERRY 500MG CAPSULES | 60 CT | \$16 |
| V42 ▶ | 184707 | FLAXSEED OIL 1000MG SOFTGELS | 100 CT | \$14 |
| V43 ▶ | 277439 | FLAXSEED OIL 1000MG SOFTGELS | 250 CT | \$23 |
| V44 ▶ | 273868 | GARLIC 400MG ODORLESS TABLETS | 200 CT | \$11 |
| V45 ▶ | 305315 | GINGER ROOT 550MG CAPSULES | 100 CT | \$15 |
| V46 ▶ | 452271 | MENOPAUSE SUPPORT CAPLETS | 28 CT | \$19 |
| V47 ▶ | 273799 | SAW PALMETTO 450MG CAPSULES | 250 CT | \$27 |
| V48 ▶ | 337711 | TURMERIC CURCUMIN 500MG CAPSULES | 60 CT | \$10 |
| IRON/ MAGNESIUM/ ZINC | | | | |
| V49 ▶ | 350480 | IRON 65MG TABLETS | 90 CT | \$6 |
| V50 ▶ | 246181 | MAGNESIUM 250MG CAPLETS | 100 CT | \$4 |
| V51 ▶ | 850942 | MAGNESIUM 500MG CAPLETS | 100 CT | \$6 |
| V52 | 277464 | SLOW RELEASE IRON TABLETS | 60 CT | \$14 |
| V53 ▶ | 965748 | TRIPLE MAGNESIUM COMPLEX CAPSULES | 120 CT | \$10 |
| V54 ▶ | 247239 | ZINC 50MG TABLETS | 100 CT | \$6 |
| MULTI VITAMINS | | | | |
| V56 ▶ | 378592 | MEN'S MULTIVITAMIN | 120 CT | \$11 |
| V57 ▶ | 448404 | MEN'S 50+ ADVANCED MULTIVITAMIN TABLETS | 65 CT | \$8 |
| V58 ▶ | 798066 | MEN'S HEALTH FORMULA MULTIVITAMIN TABLETS | 100 CT | \$9 |
| V59 ▶ | 459960 | ONE DAILY WOMEN'S 50 PLUS ADVANCED VITAMIN | 100 CT | \$11 |
| V60 ▶ | 255042 | ONE DAILY WOMEN'S FORMULA VITAMIN | 100 CT | \$9 |
| V61 ▶ | 448393 | WOMEN'S 50+ ADVANCED MULTIVITAMIN TABLETS | 65 CT | \$8 |
| V62 ▶ | 378615 | WOMEN'S MULTIVITAMIN | 120 CT | \$11 |

| CODE | SKU | PRODUCT | SIZE | PRICE |
|--------------------|--------|--|--------|-------|
| SUPPLEMENTS | | | | |
| V64 ▶ | 250191 | POTASSIUM GLUCONATE 650MG CAPLETS | 100 CT | \$5 |
| V65 ▶ | 382098 | PROSTATE MAX+ CAPLETS | 60 CT | \$27 |
| VIT A/ D/ K | | | | |
| V66 ▶ | 199216 | VITAMIN A 8000IU SOFTGELS | 100 CT | \$6 |
| V67 ▶ | 162640 | VITAMIN D3 10,000IU SOFTGELS | 60 CT | \$16 |
| V68 ▶ | 346754 | VITAMIN D3 1000IU SOFTGELS | 100 CT | \$9 |
| V69 ▶ | 695912 | VITAMIN D3 1000IU SOFTGELS | 300 CT | \$16 |
| V70 ▶ | 710787 | VITAMIN D3 2000IU SOFTGELS | 100 CT | \$9 |
| V71 ▶ | 277289 | VITAMIN D3 400IU SOFTGELS | 100 CT | \$4 |
| V72 ▶ | 717911 | VITAMIN D3 5000IU SOFTGELS | 100 CT | \$14 |
| VITAMIN B | | | | |
| V73 ▶ | 928918 | B-12 1000MCG TABLETS | 400 CT | \$17 |
| V74 ▶ | 247321 | B-12 1000MCG TABLETS | 60 CT | \$7 |
| V75 ▶ | 204743 | B-12 2000MCG TABLETS | 60 CT | \$9 |
| V76 ▶ | 933919 | B-12 5000MCG MICROLOZENGES CHERRY | 30 CT | \$14 |
| V77 ▶ | 343572 | B-12 5000MCG MICROTABLETS | 100 CT | \$15 |
| V78 ▶ | 711999 | B-12 VITAMIN 1000MCG TABLETS | 200 CT | \$10 |
| V79 ▶ | 965747 | BIOTIN 10,000MCG SOFTGELS | 60 CT | \$12 |
| V80 ▶ | 931260 | BIOTIN 5000MCG TABLETS | 150 CT | \$22 |
| V81 ▶ | 300258 | FOLIC ACID 800MCG TABLETS | 100 CT | \$4 |
| V82 ▶ | 145626 | SUPER B COMPLEX WITH VITAMIN C CAPLETS | 100 CT | \$12 |
| V83 ▶ | 300260 | SUPER B COMPLEX WITH VITAMIN C CAPLETS | 300 CT | \$29 |
| VITAMIN C | | | | |
| V84 ▶ | 973804 | AIRSHIELD ADULT IMMUNITY GUMMY | 42 CT | \$11 |
| V85 ▶ | 446547 | AIRSHIELD IMMUNITY GUMMIES | 63 CT | \$19 |
| V86 ▶ | 166595 | CHEWABLE C 1000MG ORANGE FLAVOR | 100 CT | \$15 |
| V87 ▶ | 231878 | VITAMIN C 1000MG CAPLETS | 100 CT | \$15 |
| V88 ▶ | 232025 | VITAMIN C 1000MG CAPLETS | 200 CT | \$19 |
| V89 ▶ | 232553 | VITAMIN C 500MG TABLETS | 250 CT | \$13 |
| V90 ▶ | 223420 | VITAMIN C WITH ROSEHIPS CAPLETS | 100 CT | \$11 |
| V91 ▶ | 222901 | VITAMIN C WITH ROSEHIPS TABLETS | 100 CT | \$8 |
| VITAMIN E | | | | |
| V92 ▶ | 243204 | VITAMIN E 1000IU SOFTGELS | 50 CT | \$18 |
| V93 ▶ | 240515 | VITAMIN E 400IU SOFTGELS | 100 CT | \$14 |
| V94 ▶ | 242040 | VITAMIN E 400IU SOFTGELS | 250 CT | \$22 |

IMPORTANT: Item list is subject to change. In the event an item is out of stock, an item of similar or greater value will be substituted in your order. If an item is recalled by the manufacturer for any reason, it will be removed from the product offering immediately.



Shop our CVS[®] Brands for trusted quality

Deciding how you'll use your OTC benefits? Choose quality products from the heart.

Product promise

We require all of our products to be safe and effective. That's why we put them to the test with an average of 350 quality tests a day.

Factory pledge

We hold our factories to a high standard. We work with them to make sure they follow good manufacturing practices. And we make sure that they follow ethical sourcing practices.

Beyond the basics

Our standards are anything but standard. That's why our vitamins are Tested to be Trusted[®].^{*} And why we restrict chemicals of concern from our beauty products.

Customer focus

Your feedback helps us make our products better. That's why we closely monitor ratings and reviews. And we take notes on in-store shoppers' experiences so we can answer their needs.

For Tested to be Trusted[®]: Product samples are tested by an independent third party. Tests are performed on a single lot. Exclusions apply. For details, please visit [CVS.com/Trusted](https://www.cvs.com/Trusted).

Only at **CVS[®]**

